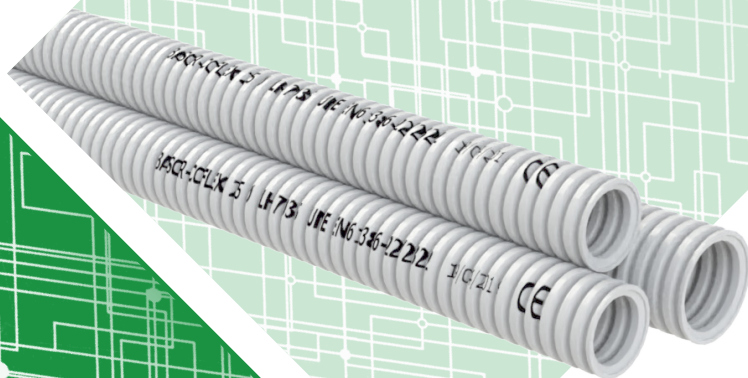
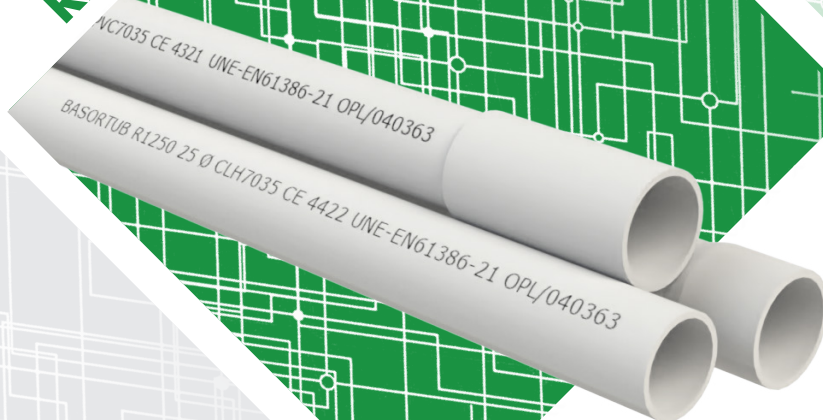


# Soluciones en tubo rígido y flexible

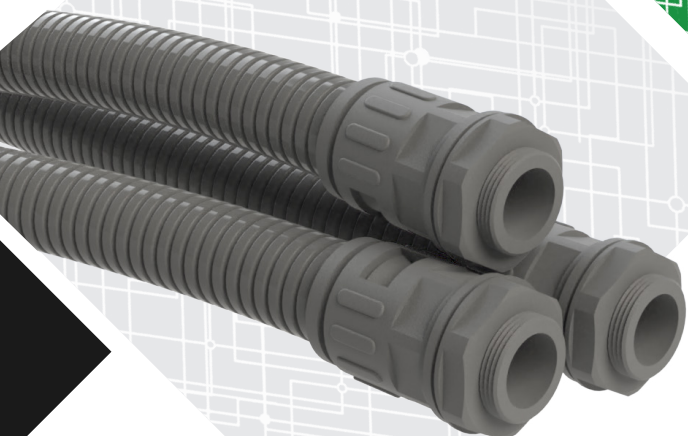
Corrugado LH



Rígido PVC y LH



Poliamidas

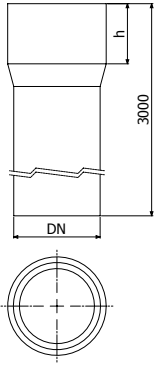


**Basortub**  
**Basorflex**



**3E Basor**  
CABLE TRAY SPECIALIST

## TUBO RÍGIDO ABOCARDADO LIBRE DE HALÓGENOS RE1250 RLH

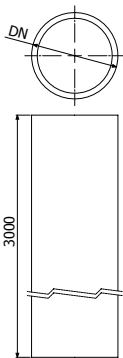


	DN	h	RLH 7035		
	mm	mm	REF.	Paquete(m)	Pallet (m)
RE1250 16	16	14	2/6453	114	3.990
RE1250 20	20	16	2/6454	57	2.565
RE1250 25	25	20	2/6455	57	1.824
RE1250 32	32	22	2/6456	30	1.050
RE1250 40	40	26	2/6457	15	720
RE1250 50	50	31	2/6458	15	525
RE1250 63	63	60	2/6459	15	270



Tubo rígido según: **UNE-EN 61386-21 Cod.4322**. No propagador de la llama: **V2 según Norma UL94**  
 Libre de halógenos **<0,07% UNE-EN 50642**. Rango de temperatura: **-5°C a +90°C**. Grado de protección **IP:54**;  
**IK:07**. Resistencia al impacto **2J**. Alta resistencia a la compresión: **1250N**.

## TUBO RÍGIDO LIBRE DE HALÓGENOS RE1250 CLH

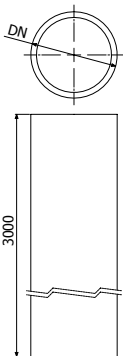


	DN	CLH 7035		
	mm	REF.	Paquete(m)	Pallet (m)
R1250 16	16	2/7217	114	3.990
R1250 20	20	2/7218	57	2.565
R1250 25	25	2/7219	57	1.824
R1250 32	32	2/7220	30	1.050
R1250 40	40	2/7221	15	720
R1250 50	50	2/7222	15	525
R1250 63	63	2/7223	15	270



Tubo rígido curvable según: **UNE-EN 61386-22 Cod.4422**. No propagador de la llama: **V0 según Norma UL94**  
 Libre de halógenos **<0,31% UNE-EN 50642**. Rango de temperatura: **-5°C a +90°C**. Grado de protección con  
 manguito JUR **IP:40**; **IK:08**. Resistencia al impacto **6J**. Alta resistencia a la compresión: **1250N**.

## TUBO RÍGIDO LIBRE DE HALÓGENOS RE750 CLH

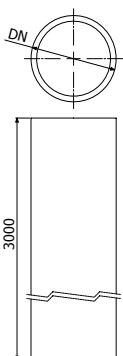


	DN	CLH 7035		
	mm	REF.	Paquete(m)	Pallet (m)
R750 16	16	2/18683	114	3.990
R750 20	20	2/18684	57	2.565
R750 25	25	2/18685	57	1.824
R750 32	32	2/18686	30	1.050



Tubo rígido curvable según: **UNE-EN 61386-22 Cod.3322**. No propagador de la llama: **V0 según Norma UL94**  
 Libre de halógenos **<0,31% UNE-EN 50642**. Rango de temperatura: **-5°C a +90°C**. Grado de protección con  
 manguito JUR **IP:40**; **IK:08**. Resistencia al impacto **2J**. Resistencia a la compresión: **750N**.

## TUBO RÍGIDO DE PVC RE1250 PVC



	DN	PVC 7035		
	mm	REF.	Paquete(m)	Pallet (m)
R1250 16	16	2/6460	114	3.990
R1250 20	20	2/6461	57	2.565
R1250 25	25	2/6462	57	1.824
R1250 32	32	2/6463	30	1.050
R1250 40	40	2/6464	15	720
R1250 50	50	2/6465	15	525
R1250 63	63	2/6466	15	270

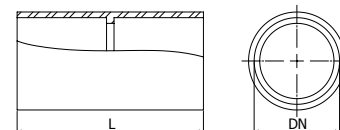


Tubo rígido curvable según: **UNE-EN 61386-22 Cod.4321**. No propagador de la llama: **V0 según Norma UL94**  
 Rango de temperatura: **-5°C a +60°C**. Grado de protección con manguito JUR **IP:40**; **IK:08**. Resistencia al impac-  
 to **2J**. Alta resistencia a la compresión: **1250N**.

## MANGUITO DE UNIÓN JUR1250



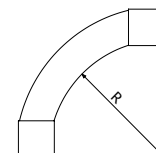
	DN mm	L mm	IP	RLH 7035		
				REF.	Bolsa (uds)	Caja (uds)
JUR1250 16	16	50	40	2/6732	40	240
JUR1250 20	20	55	40	2/6733	20	240
JUR1250 25	25	60	40	2/6734	20	140
JUR1250 32	32	70	40	2/6735	10	50
JUR1250 40	40	80	40	2/6736	8	48
JUR1250 50	50	90	40	2/6737	-	16
JUR1250 63	63	130	40	2/6738	-	10



## CURVA PLANA 90° CPR



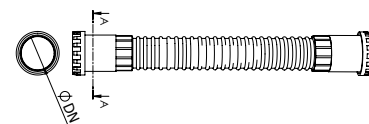
	DN mm	R mm	IP	RLH 7035		PVC 7035	
				REF.	Caja (uds)	REF.	Caja (uds)
CPR 16	16	54	40	2/6739	50	2/18790	50
CPR 20	20	67	40	2/6740	50	2/18791	50
CPR 25	25	85	40	2/6741	25	2/18792	25
CPR 32	32	110	40	2/6742	25	2/18793	25
CPR 40	40	138	40	2/6743	15	2/18794	15
CPR 50	50	172	40	2/6744	5	2/18795	5



## CURVA FLEXIBLE CFR



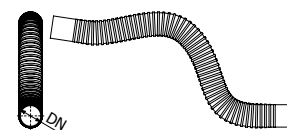
	DN mm	L mm	IP	RLH 7035		
				REF.	Bolsa (uds)	Caja (uds)
CFR 16	16	220	65	2/6819	10	40
CFR 20	20	230	65	2/6820	10	150
CFR 25	25	540	65	2/6821	5	85
CFR 32	32	270	65	2/6822	-	20
CFR 40	40	300	65	2/6823	5	35
CFR 50	50	340	65	2/6824	10	20



## CURVA FLEXIBLE CFR2



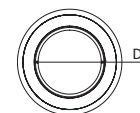
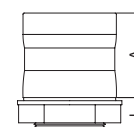
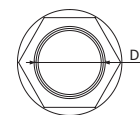
	DN mm	L mm	IP	PVC 7035	
				REF.	Caja (uds)
CFR2 16	16	280	64	2/7432	16
CFR2 20	20	280	64	2/7433	40
CFR2 25	25	340	64	2/7434	20
CFR2 32	32	380	64	2/7435	20



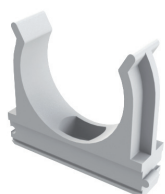
## MANGUITO MCR1250



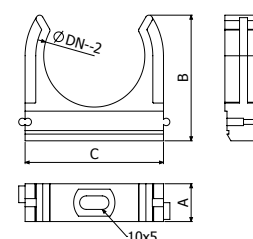
	DN	L	A	IP	RLH 7035		
	mm	mm	mm		REF.	Bolsa (uds)	Caja (uds)
MCR1250 16	16	15	42	67	2/6746	25	500
MCR1250 20	20	15	44	67	2/6747	25	600
MCR1250 25	25	15	47	67	2/6748	25	400
MCR1250 32	32	16	52	67	2/6749	15	210
MCR1250 40	40	16	64	67	2/6750	10	100
MCR1250 50	50	18	72	67	2/6751	5	70



## SOPORTE SPR1250



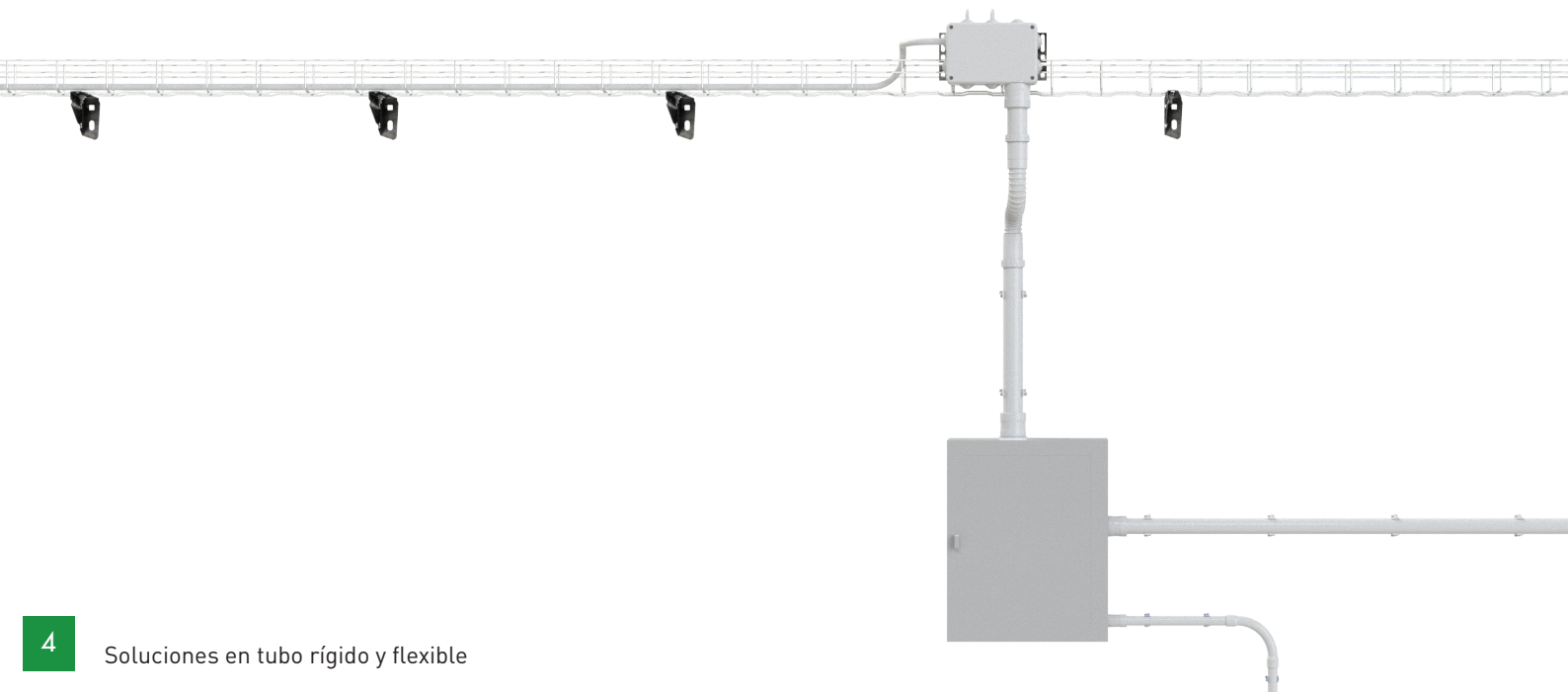
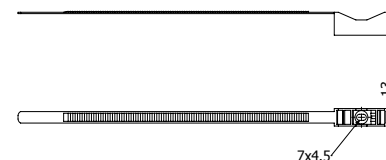
	DN	A	B	C	RLH 7035		
	mm	mm	mm	mm	REF.	Bolsa (uds)	Caja (uds)
SPR1250 16	16	12	25	21	2/6753	100	1.000
SPR1250 20	20	12	28	26	2/6754	100	500
SPR1250 25	25	12	32	31	2/6755	100	2.000
SPR1250 32	32	12	43	44	2/6756	50	300
SPR1250 40	40	14	50	52	2/6757	50	600
SPR1250 50	50	14	56	62	2/6758	25	500



## ABRAZADERA ABR 1250



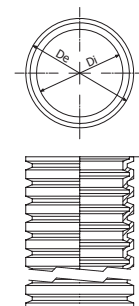
	DN	F	RLH 7035		
	mm	kg	REF.	Bolsa (uds)	Caja (uds)
ABR1250 16-32	16/32	15	2/6760	50	2.000
ABR1250 20-63	20/63	15	2/6761	100	1.000



## COFLEX



	Dext	Dint	L	RLH 7035		
	mm	mm		REF.	Rollo (m)	Pallet (m)
COFLEX 16	16	11	100	2/6995	100	7.000
COFLEX 20	20	15	100	2/6996	100	4.800
COFLEX 25	25	20	75	2/6997	75	3.300
COFLEX 32	32	27	50	2/6998	50	2.200
COFLEX 40	40	34	25	2/6999	25	1.200
COFLEX 50	50	44	25	2/7000	25	800

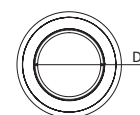
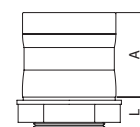
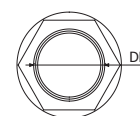
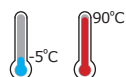


Tubo corrugado curvable según: **UNE-EN 61386-23 Cod.2322**. No propagador de la llama. Libre de halógenos según: **<0,4% UNE-EN 50642**. Rango de temperatura: **-5°C a +90°C**. Resistencia al impacto **2J**. Resistencia a la compresión: **390N**.

## MANGUITO MCR1250



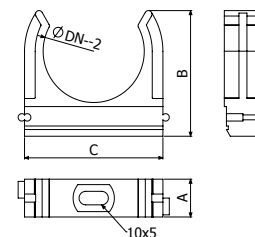
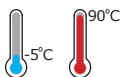
	DN	L	A	IP	RLH 7035		
	mm	mm	mm		REF.	Bolsa (uds)	Caja (uds)
MCR1250 16	16	15	42	67	2/6746	25	500
MCR1250 20	20	15	44	67	2/6747	25	600
MCR1250 25	25	15	47	67	2/6748	25	400
MCR1250 32	32	16	52	67	2/6749	15	210
MCR1250 40	40	16	64	67	2/6750	10	100
MCR1250 50	50	18	72	67	2/6751	5	70



## SOPORTE SPR1250



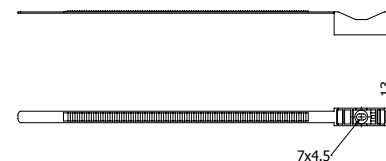
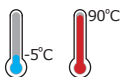
	DN	A	B	C	RLH 7035		
	mm	mm	mm	mm	REF.	Bolsa (uds)	Caja (uds)
SPR1250 16	16	12	25	21	2/6753	100	1.000
SPR1250 20	20	12	28	26	2/6754	100	500
SPR1250 25	25	12	32	31	2/6755	100	2.000
SPR1250 32	32	12	43	44	2/6756	50	300
SPR1250 40	40	14	50	52	2/6757	50	600
SPR1250 50	50	14	56	62	2/6758	25	500



## BRAZADERA ABR1250



	DN	F	RLH 7035		
	mm	kg	REF.	Bolsa (uds)	Caja (uds)
ABR1250 16-32	16/32	15	2/6760	50	2.000
ABR1250 20-63	20/63	15	2/6761	100	1.000





## TUBO FLEXIBLE FLEXL

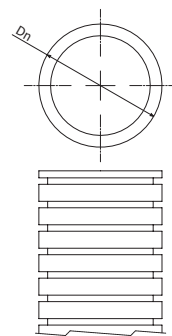


RAL 7031



RAL 9011

	Dn mm	Dmax mm	Dmin mm	rmin mm	PA6 7031			PA6 9011		
					REF.	Rollo (m)	Pallet (m)	REF.	Rollo (m)	Pallet (m)
FLEXL 10	10	10	6,5	5	2/6517	50	12.500	2/6526	50	12.500
FLEXL 13	13	13	10	7,5	2/6518	100	9.000	2/6527	100	9.000
FLEXL 16	16	15,8	12	10	2/6519	50	4.800	2/6528	50	4.800
FLEXL 18	18	18,5	14,3	12,5	2/6520	50	4.200	2/6529	50	4.200
FLEXL 21	21	21,2	17	12,5	2/6521	50	3.100	2/6530	50	3.100
FLEXL 28	28	28,5	23	15	2/6522	50	1.400	2/6531	50	1.400
FLEXL 34	34	34,5	29	20	2/6523	25	850	2/6532	25	850
FLEXL 42	42	42,5	36	32,5	2/6524	25	650	2/6533	25	650
FLEXL 54	54	54,5	48	37,5	2/6525	25	400	2/6534	25	400



Tubo flexible de poliamida según: **UNE-EN 61386-23 Cod.2432**. No propagador de la llama: **V2 según Norma UL94**. Libre de halógenos **<0,4% UNE-EN 50642** Rango de temperatura: **-20°C a +100°C (-40°C a +120°C en aplicación estática)**. Grado de protección con rácor BGQ: **IP:68; IK:08**. Resistencia al impacto **6J**. Resistencia a la compresión: **320N**.

## MANGUITO BGQ PG

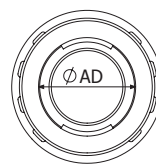
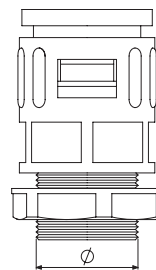


RAL 7031



RAL 9011

	AD mm	Rosca PG	ø mm	UNE-EN 61386	PA6 7031			PA6 9011		
					REF.	Bolsa(uds)	Caja(uds)	REF.	Bolsa(uds)	Caja(uds)
BGQ 10PG07	10	7	12,50	1353	2/6597	10	1000	2/6608	10	1000
BGQ 13PG09	13	9	15,20	1353	2/6598	50	500	2/6609	50	500
BGQ 16PG11	15,8	11	18,60	1353	2/6599	50	300	2/6610	50	300
BGQ 16PG13	15,8	13,5	20,40	1353	2/6600	10	100	2/6611	10	100
BGQ 18PG13	18,5	13,5	20,40	1353	2/6601	50	250	2/6612	50	250
BGQ 21PG13	21,2	13,5	20,40	1353	2/6602	10	100	2/6613	10	100
BGQ 21PG16	21,2	16	22,50	1353	2/6603	25	150	2/6614	25	150
BGQ 28PG21	28,5	21	28,30	1353	2/6604	10	250	2/6615	10	250
BGQ 34PG29	34,5	29	37,00	1353	2/6605	10	40	2/6616	10	40
BGQ 42PG36	42,5	36	47,00	1353	2/6606	8	120	2/6617	8	120
BGQ 54PG48	54,5	48	59,30	1353	2/6607	2	90	2/6618	2	90



## MANGUITO BGQ M

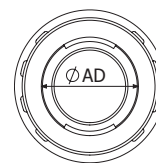
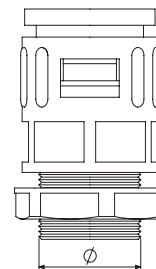


RAL 7031



RAL 9011

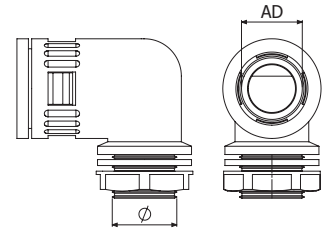
	AD mm	ø M	UNE-EN 61386	PA6 7031			PA6 9011		
				REF.	Bolsa(uds)	Caja(uds)	REF.	Bolsa(uds)	Caja(uds)
BGQ 10M12	10	12	1353	2/6639	10	1000	2/6650	10	1000
BGQ 13M16	13	16	1353	2/6640	10	300	2/6651	10	300
BGQ 16M16	15,8	16	1353	2/6641	30	800	2/6652	30	800
BGQ 16M20	15,8	20	1353	2/6642	10	600	2/6653	10	600
BGQ 18M20	18,5	20	1353	2/6643	10	720	2/6654	10	720
BGQ 21M20	21,2	20	1353	2/6644	10	640	2/6655	10	640
BGQ 28M25	21,2	25	1353	2/6645	10	420	2/6656	10	420
BGQ 34M32	28,5	32	1353	2/6646	10	200	2/6657	10	200
BGQ 42M40	34,5	40	1353	2/6647	2	120	2/6658	2	120
BGQ 54M50	42,5	50	1353	2/6648	2	120	2/6659	2	120
BGQ 54M63	54,5	63	1353	2/6649	2	90	2/6660	2	90



## MANGUITO 90° BGW PG



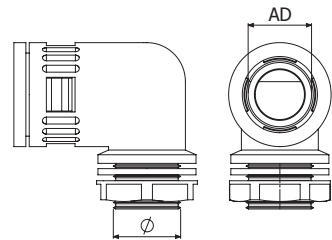
	AD	Rosca	ø	PA6 7031			PA6 9011		
				REF.	Bolsa(uds)	Caja(uds)	REF.	Bolsa(uds)	Caja(uds)
BGW90 10PG07	10	7	12,50	2/6619	10	1000	2/6629	10	1000
BGW90 13PG09	13	9	15,20	2/6620	10	200	2/6630	10	200
BGW90 16PG11	15,8	11	18,60	2/6621	10	640	2/6631	10	640
BGW90 16PG13	15,8	13	20,40	2/6622	10	400	2/6632	10	400
BGW90 21PG13	21,2	13	20,40	2/6623	10	300	2/6633	10	300
BGW90 21PG16	21,2	16	22,50	2/6624	10	360	2/6634	10	360
BGW90 28PG21	28,5	21	28,30	2/6625	10	200	2/6635	10	200
BGW90 34PG29	34,5	29	37,00	2/6626	5	150	2/6636	5	150
BGW90 42PG36	42,5	36	47,00	2/6627	2	80	2/6637	2	80
BGW90 54PG48	54,5	48	59,30	2/6628	2	60	2/6638	2	60



## MANGUITO 90° BGW M



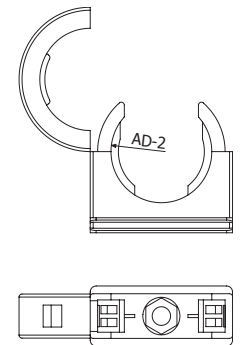
	AD	Rosca	PA6 7031			PA6 9011		
			REF.	Bolsa(uds)	Caja(uds)	REF.	Bolsa(uds)	Caja(uds)
BGW90 10M12	10	12	2/6661	10	1000	2/6671	10	1000
BGW90 13M16	13	16	2/6662	10	800	2/6672	10	800
BGW90 16M16	15,8	16	2/6663	10	600	2/6673	10	600
BGW90 16M20	15,8	20	2/6664	10	540	2/6674	10	540
BGW90 21M20	21,2	20	2/6665	10	400	2/6675	10	400
BGW90 28M25	28,5	25	2/6666	10	200	2/6676	10	200
BGW90 34M32	34,5	32	2/6667	5	150	2/6677	5	150
BGW90 42M40	42,5	40	2/6668	2	80	2/6678	2	80
BGW90 54M50	54,5	50	2/6669	2	60	2/6679	2	60
BGW90 54M63	54,5	63	2/6670	2	50	2/6680	2	50



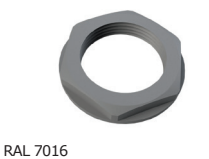
## ABRAZADERA SPFLEX



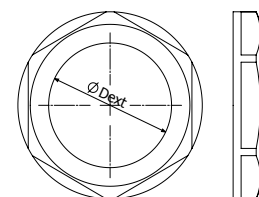
	AD	PA6 7031			PA6 9011		
		REF.	Bolsa(uds)	Caja(uds)	REF.	Bolsa(uds)	Caja(uds)
SPFLEX 10	10	2/6681	10	700	2/6690	10	700
SPFLEX 13	13	2/6682	10	600	2/6691	10	600
SPFLEX 16	15,8	2/6683	10	100	2/6692	10	100
SPFLEX 18	18,5	2/6684	10	100	2/6693	10	100
SPFLEX 21	21,2	2/6685	10	200	2/6694	10	200
SPFLEX 28	28,5	2/6686	10	100	2/6695	10	100
SPFLEX 34	34,5	2/6687	10	100	2/6696	10	100
SPFLEX 42	42,5	2/6688	5	160	2/6697	5	160
SPFLEX 54	54,5	2/6689	5	200	2/6698	5	200



## TUERCA TRFLEX PG



	Dext	PA6 7031		
		REF.	Bolsa(uds)	Caja(uds)
TRFLEX PG07	7	2/17568	50	350
TRFLEX PG09	9	2/17569	50	500
TRFLEX PG11	11	2/17570	50	500
TRFLEX PG13	13	2/17571	50	500
TRFLEX PG16	16	2/17572	50	400
TRFLEX PG21	21	2/17573	50	500
TRFLEX PG29	29	2/17574	50	500
TRFLEX PG36	36	2/17575	50	150
TRFLEX PG48	48	2/17576	10	50



# BE Basor

CABLE TRAY SPECIALIST



**Basor Electric S.A**  
Avenida Alcodar 45-47  
Gandia (Valencia)  
Tel.96.287.6695



**LinkedIn**  
Basor Electric S.A



**Twitter**  
@Basorelectric



**Youtube**  
[youtube.com/user/basorelectric](https://youtube.com/user/basorelectric)



**Web**  
[www.basor.com](http://www.basor.com)