

BASORTUB

Tubería Plástica

DISPONIBLE EN PVC Y LIBRE DE HALÓGENOS

CUMPLIMOS



IMPACTO Y
COMPRESIÓN

UNE
Normalización Española

UNE-EN 61386



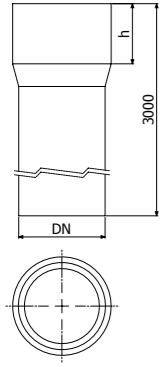
DESCUBRE NUESTRA
NUEVA TARIFA

ESCANEA EL CÓDIGO QR
O ENTRA EN [BASOR.COM/DESCARGAS](https://www.basor.com)

BE Basor
CABLE TRAY SPECIALIST

Tubo Rígido de PVC y LH

TUBO RÍGIDO ABOCARDADO LIBRE DE HALÓGENOS RE1250 RLH

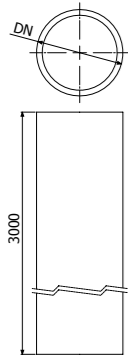


	DN	h	RLH 7035		
			mm	mm	REF. Paquete(m) Pallet (m)
RE1250 16	16	14	2/6453	114	3.990
RE1250 20	20	16	2/6454	57	2.565
RE1250 25	25	20	2/6455	57	1.824
RE1250 32	32	22	2/6456	30	1.050
RE1250 40	40	26	2/6457	15	720
RE1250 50	50	31	2/6458	15	525
RE1250 63	63	60	2/6459	15	270

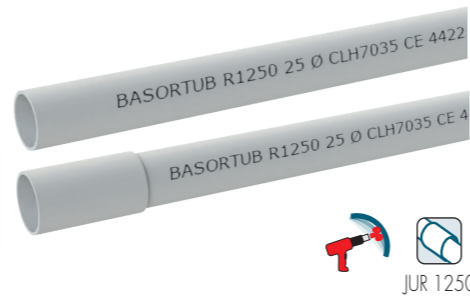


Tubo rígido según: **UNE-EN 61386-21 Cod.4322**. No propagador de la llama: **V2** según Norma **UL94**. Libre de halógenos **<0,07% UNE-EN 50642**. Rango de temperatura: **-5°C a +90°C**. Grado de protección **IP:54**; **IK:07**. Resistencia al impacto **2J**. Alta resistencia a la compresión: **1250N**.

TUBO RÍGIDO LIBRE DE HALÓGENOS RE1250 CLH

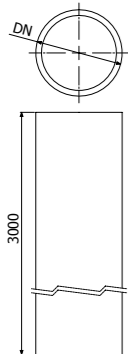


	DN	CLH 7035		
		mm	REF.	Paquete(m) Pallet (m)
R1250 16	16	2/7217	114	3.990
R1250 20	20	2/7218	57	2.565
R1250 25	25	2/7219	57	1.824
R1250 32	32	2/7220	30	1.050
R1250 40	40	2/7221	15	720
R1250 50	50	2/7222	15	525
R1250 63	63	2/7223	15	270



Tubo rígido curvable según: **UNE-EN 61386-22 Cod.4422**. No propagador de la llama: **V0** según Norma **UL94**. Libre de halógenos **<0,31% UNE-EN 50642**. Rango de temperatura: **-5°C a +90°C**. Grado de protección con manguito JUR **IP:40**; **IK:08**. Resistencia al impacto **6J**. Alta resistencia a la compresión: **1250N**.

TUBO RÍGIDO LIBRE DE HALÓGENOS RE750 CLH

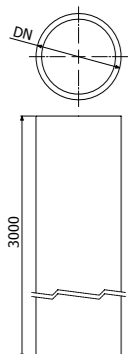


	DN	CLH 7035		
		mm	REF.	Paquete(m) Pallet (m)
R750 16	16	2/18683	114	3.990
R750 20	20	2/18684	57	2.565
R750 25	25	2/18685	57	1.824
R750 32	32	2/18686	30	1.050



Tubo rígido curvable según: **UNE-EN 61386-22 Cod.3322**. No propagador de la llama: **V0** según Norma **UL94**. Libre de halógenos **<0,31% UNE-EN 50642**. Rango de temperatura: **-5°C a +90°C**. Grado de protección con manguito JUR **IP:40**; **IK:08**. Resistencia al impacto **2J**. Resistencia a la compresión: **750N**.

TUBO RÍGIDO DE PVC RE1250 PVC



	DN	PVC 7035		
		mm	REF.	Paquete(m) Pallet (m)
R1250 16	16	2/6460	114	3.990
R1250 20	20	2/6461	57	2.565
R1250 25	25	2/6462	57	1.824
R1250 32	32	2/6463	30	1.050
R1250 40	40	2/6464	15	720
R1250 50	50	2/6465	15	525
R1250 63	63	2/6466	15	270



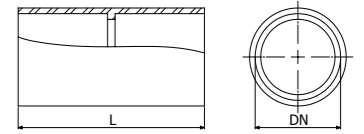
Tubo rígido curvable según: **UNE-EN 61386-22 Cod.4321**. No propagador de la llama: **V0** según Norma **UL94**. Rango de temperatura: **-5°C a +60°C**. Grado de protección con manguito JUR **IP:40**; **IK:08**. Resistencia al impacto **2J**. Alta resistencia a la compresión: **1250N**.

Tubo Rígido de PVC y LH

MANGUITO DE UNIÓN JUR1250



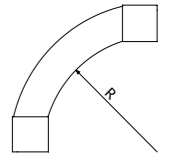
	DN	L	IP	RLH 7035		
				mm	mm	REF. Bolsa (uds) Caja (uds)
JUR1250 16	16	50	40	2/6732	40	240
JUR1250 20	20	55	40	2/6733	20	240
JUR1250 25	25	60	40	2/6734	20	140
JUR1250 32	32	70	40	2/6735	10	50
JUR1250 40	40	80	40	2/6736	8	48
JUR1250 50	50	90	40	2/6737	-	16
JUR1250 63	63	130	40	2/6738	-	10



CURVA PLANA 90° CPR



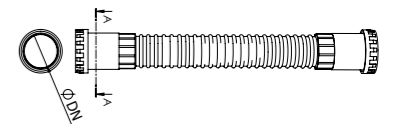
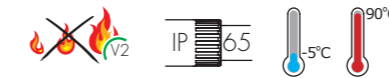
	DN	R	IP	RLH 7035		PVC 7035	
				REF.	Caja (uds)	REF.	Caja (uds)
CPR 16	16	54	40	2/6739	50	2/18790	50
CPR 20	20	67	40	2/6740	50	2/18791	50
CPR 25	25	85	40	2/6741	25	2/18792	25
CPR 32	32	110	40	2/6742	25	2/18793	25
CPR 40	40	138	40	2/6743	15	2/18794	15
CPR 50	50	172	40	2/6744	5	2/18795	5



CURVA FLEXIBLE CFR



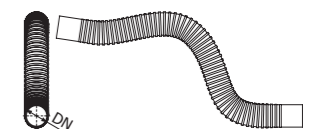
	DN	L	IP	RLH 7035		
				REF.	Bolsa (uds)	Caja (uds)
CFR 16	16	220	65	2/6819	10	40
CFR 20	20	230	65	2/6820	10	150
CFR 25	25	540	65	2/6821	5	85
CFR 32	32	270	65	2/6822	-	20
CFR 40	40	300	65	2/6823	5	35
CFR 50	50	340	65	2/6824	10	20



CURVA FLEXIBLE CFR2



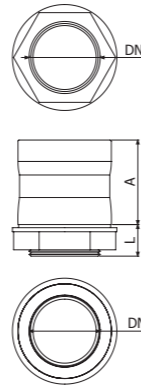
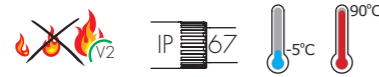
	DN	L	IP	PVC 7035	
				REF.	Caja (uds)
CFR2 16	16	280	64	2/7432	16
CFR2 20	20	280	64	2/7433	40
CFR2 25	25	340	64	2/7434	20
CFR2 32	32	380	64	2/7435	20



MANGUITO MCR1250



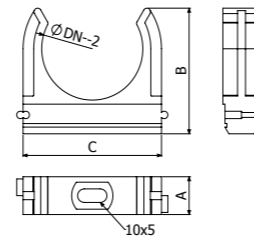
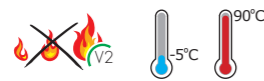
	DN mm	L mm	A mm	IP	RLH 7035		
					REF.	Bolsa (uds)	Caja (uds)
MCR1250 16	16	15	42	67	2/6746	25	500
MCR1250 20	20	15	44	67	2/6747	25	600
MCR1250 25	25	15	47	67	2/6748	25	400
MCR1250 32	32	16	52	67	2/6749	15	210
MCR1250 40	40	16	64	67	2/6750	10	100
MCR1250 50	50	18	72	67	2/6751	5	70



SOPORTE SPR1250



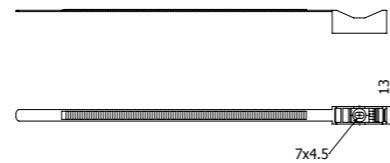
	DN mm	A mm	B mm	C mm	RLH 7035		
					REF.	Bolsa (uds)	Caja (uds)
SPR1250 16	16	12	25	21	2/6753	100	1.000
SPR1250 20	20	12	28	26	2/6754	100	500
SPR1250 25	25	12	32	31	2/6755	100	2.000
SPR1250 32	32	12	43	44	2/6756	50	300
SPR1250 40	40	14	50	52	2/6757	50	600
SPR1250 50	50	14	56	62	2/6758	25	500



ABRAZADERA ABR 1250



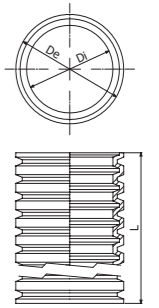
	DN mm	F kg	RLH 7035		
			REF.	Bolsa (uds)	Caja (uds)
ABR1250 16-32	16/32	15	2/6760	50	2.000
ABR1250 20-63	20/63	15	2/6761	100	1.000



COFLEX

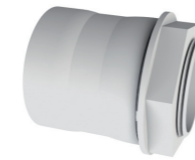


	Dext mm	Dint mm	L m	RLH 7035		
				REF.	Rollo (m)	Pallet (m)
COFLEX 16	16	11	100	2/6995	100	7.000
COFLEX 20	20	15	100	2/6996	100	4.800
COFLEX 25	25	20	75	2/6997	75	3.300
COFLEX 32	32	27	50	2/6998	50	2.200
COFLEX 40	40	34	25	2/6999	25	1.200
COFLEX 50	50	44	25	2/7000	25	800

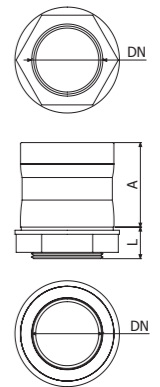


Tubo corrugado curvable según: UNE-EN 61386-23 Cod.2322. No propagador de la llama. Libre de halógenos según: <0,4% UNE-EN 50642. Rango de temperatura: -5°C a +90°C. Resistencia al impacto 2J. Resistencia a la compresión: 390N.

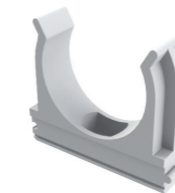
MANGUITO MCR1250



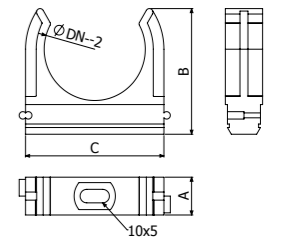
	DN mm	L mm	A mm	IP	RLH 7035		
					REF.	Bolsa (uds)	Caja (uds)
MCR1250 16	16	15	42	67	2/6746	25	500
MCR1250 20	20	15	44	67	2/6747	25	600
MCR1250 25	25	15	47	67	2/6748	25	400
MCR1250 32	32	16	52	67	2/6749	15	210
MCR1250 40	40	16	64	67	2/6750	10	100
MCR1250 50	50	18	72	67	2/6751	5	70



SOPORTE SPR1250



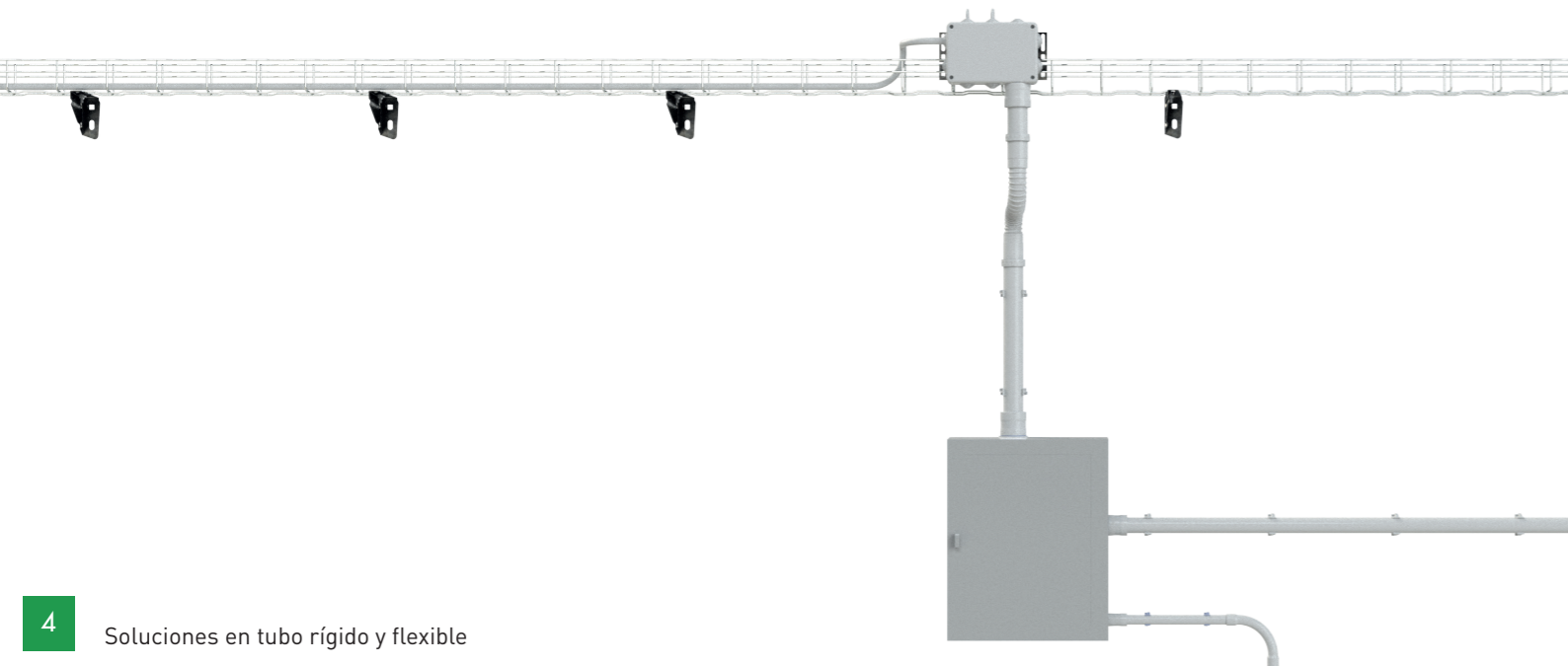
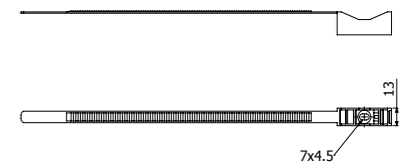
	DN mm	A mm	B mm	C mm	RLH 7035		
					REF.	Bolsa (uds)	Caja (uds)
SPR1250 16	16	12	25	21	2/6753	100	1.000
SPR1250 20	20	12	28	26	2/6754	100	500
SPR1250 25	25	12	32	31	2/6755	100	2.000
SPR1250 32	32	12	43	44	2/6756	50	300
SPR1250 40	40	14	50	52	2/6757	50	600
SPR1250 50	50	14	56	62	2/6758	25	500



ABRAZADERA ABR1250

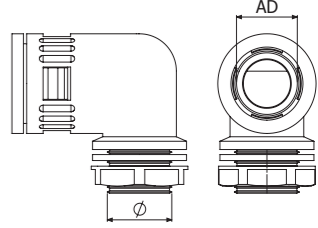


	DN mm	F kg	RLH 7035		
			REF.	Bolsa (uds)	Caja (uds)
ABR1250 16-32	16/32	15	2/6760	50	2.000
ABR1250 20-63	20/63	15	2/6761	100	1.000



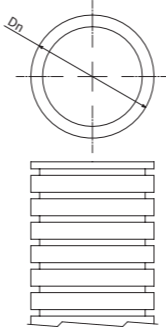
MANGUITO 90° BGW PG

	AD mm	Rosca PG	ø mm	PA6 7031			PA6 9011		
				REF.	Bolsa(uds)	Caja(uds)	REF.	Bolsa(uds)	Caja(uds)
BGW90 10PG07	10	7	12,50	2/6619	10	1000	2/6629	10	1000
BGW90 13PG09	13	9	15,20	2/6620	10	200	2/6630	10	200
BGW90 16PG11	15,8	11	18,60	2/6621	10	640	2/6631	10	640
BGW90 16PG13	15,8	13	20,40	2/6622	10	400	2/6632	10	400
BGW90 21PG13	21,2	13	20,40	2/6623	10	300	2/6633	10	300
BGW90 21PG16	21,2	16	22,50	2/6624	10	360	2/6634	10	360
BGW90 28PG21	28,5	21	28,30	2/6625	10	200	2/6635	10	200
BGW90 34PG29	34,5	29	37,00	2/6626	5	150	2/6636	5	150
BGW90 42PG36	42,5	36	47,00	2/6627	2	80	2/6637	2	80
BGW90 54PG48	54,5	48	59,30	2/6628	2	60	2/6638	2	60



TUBO FLEXIBLE FLEXL

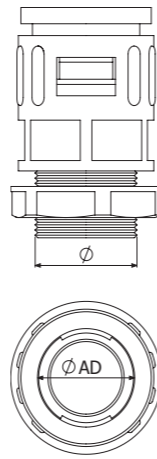
	Dn mm	Dmax mm	Dmin mm	rmin mm	PA6 7031			PA6 9011		
					REF.	Rollo (m)	Pallet (m)	REF.	Rollo (m)	Pallet (m)
FLEXL 10	10	10	6,5	5	2/6517	50	12.500	2/6526	50	12.500
FLEXL 13	13	13	10	7,5	2/6518	100	9.000	2/6527	100	9.000
FLEXL 16	16	15,8	12	10	2/6519	50	4.800	2/6528	50	4.800
FLEXL 18	18	18,5	14,3	12,5	2/6520	50	4.200	2/6529	50	4.200
FLEXL 21	21	21,2	17	12,5	2/6521	50	3.100	2/6530	50	3.100
FLEXL 28	28	28,5	23	15	2/6522	50	1.400	2/6531	50	1.400
FLEXL 34	34	34,5	29	20	2/6523	25	850	2/6532	25	850
FLEXL 42	42	42,5	36	32,5	2/6524	25	650	2/6533	25	650
FLEXL 54	54	54,5	48	37,5	2/6525	25	400	2/6534	25	400



Tubo flexible de poliamida según: UNE-EN 61386-23 Cod.2432. No propagador de la llama: V2 según Norma UL94. Libre de halógenos <0,4% UNE-EN 50642 Rango de temperatura: -20°C a +100°C (-40°C a +120°C en aplicación estática). Grado de protección con rácor BGQ: IP:68; IK:08. Resistencia al impacto 6J. Resistencia a la compresión: 320N.

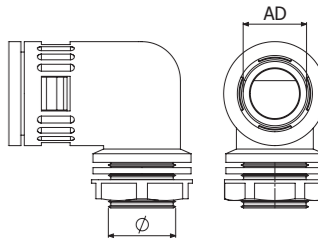
MANGUITO BGQ PG

	AD mm	Rosca PG	ø mm	UNE-EN 61386	PA6 7031			PA6 9011		
					REF.	Bolsa(uds)	Caja(uds)	REF.	Bolsa(uds)	Caja(uds)
BGQ 10PG07	10	7	12,50	1353	2/6597	10	1000	2/6608	10	1000
BGQ 13PG09	13	9	15,20	1353	2/6598	50	500	2/6609	50	500
BGQ 16PG11	15,8	11	18,60	1353	2/6599	50	300	2/6610	50	300
BGQ 16PG13	15,8	13,5	20,40	1353	2/6600	10	100	2/6611	10	100
BGQ 18PG13	18,5	13,5	20,40	1353	2/6601	50	250	2/6612	50	250
BGQ 21PG13	21,2	13,5	20,40	1353	2/6602	10	100	2/6613	10	100
BGQ 21PG16	21,2	16	22,50	1353	2/6603	25	150	2/6614	25	150
BGQ 28PG21	28,5	21	28,30	1353	2/6604	10	250	2/6615	10	250
BGQ 34PG29	34,5	29	37,00	1353	2/6605	10	40	2/6616	10	40
BGQ 42PG36	42,5	36	47,00	1353	2/6606	8	120	2/6617	8	120
BGQ 54PG48	54,5	48	59,30	1353	2/6607	2	90	2/6618	2	90



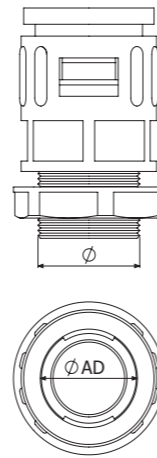
MANGUITO 90° BGW M

	AD mm	Rosca M	PA6 7031			PA6 9011		
			REF.	Bolsa(uds)	Caja(uds)	REF.	Bolsa(uds)	Caja(uds)
BGW90 10M12	10	12	2/6661	10	1000	2/6671	10	1000
BGW90 13M16	13	16	2/6662	10	800	2/6672	10	800
BGW90 16M16	15,8	16	2/6663	10	600	2/6673	10	600
BGW90 16M20	15,8	20	2/6664	10	540	2/6674	10	540
BGW90 21M20	21,2	20	2/6665	10	400	2/6675	10	400
BGW90 28M25	28,5	25	2/6666	10	200	2/6676	10	200
BGW90 34M32	34,5	32	2/6667	5	150	2/6677	5	150
BGW90 42M40	42,5	40	2/6668	2	80	2/6678	2	80
BGW90 54M50	54,5	50	2/6669	2	60	2/6679	2	60
BGW90 54M63	54,5	63	2/6670	2	50	2/6680	2	50



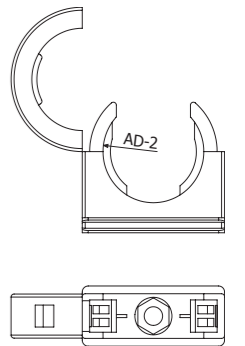
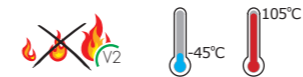
MANGUITO BGQ M

	AD mm	ø M	UNE-EN 61386	PA6 7031			PA6 9011		
				REF.	Bolsa(uds)	Caja(uds)	REF.	Bolsa(uds)	Caja(uds)
BGQ 10M12	10	12	1353	2/6639	10	1000	2/6650	10	1000
BGQ 13M16	13	16	1353	2/6640	10	300	2/6651	10	300
BGQ 16M16	15,8	16	1353	2/6641	30	800	2/6652	30	800
BGQ 16M20	15,8	20	1353	2/6642	10	600	2/6653	10	600
BGQ 18M20	18,5	20	1353	2/6643	10	720	2/6654	10	720
BGQ 21M20	21,2	20	1353	2/6644	10	640	2/6655	10	640
BGQ 28M25	21,2	25	1353	2/6645	10	420	2/6656	10	420
BGQ 34M32	28,5	32	1353	2/6646	10	200	2/6657	10	200
BGQ 42M40	34,5	40	1353	2/6647	2	120	2/6658	2	120
BGQ 54M50	42,5	50	1353	2/6648	2	120	2/6659	2	120
BGQ 54M63	54,5	63	1353	2/6649	2	90	2/6660	2	90



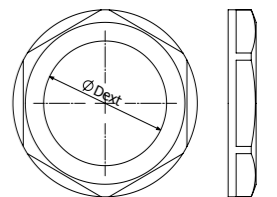
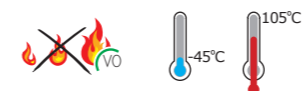
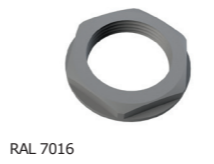
ABRAZADERA SPFLEX

	AD mm	PA6 7031			PA6 9011		
		REF.	Bolsa(uds)	Caja(uds)	REF.	Bolsa(uds)	Caja(uds)
SPFLEX 10	10	2/6681	10	700	2/6690	10	700
SPFLEX 13	13	2/6682	10	600	2/6691	10	600
SPFLEX 16	15,8	2/6683	10	100	2/6692	10	100
SPFLEX 18	18,5	2/6684	10	100	2/6693	10	100
SPFLEX 21	21,2	2/6685	10	200	2/6694	10	200
SPFLEX 28	28,5	2/6686	10	100	2/6695	10	100
SPFLEX 34	34,5	2/6687	10	100	2/6696	10	100
SPFLEX 42	42,5	2/6688	5	160	2/6697	5	160
SPFLEX 54	54,5	2/6689	5	200	2/6698	5	200



TUERCA TRFLEX PG

	Dext PG	PA6 7031		
		REF.	Bolsa(uds)	Caja(uds)
TRFLEX PG07	7	2/17568	50	350
TRFLEX PG09	9	2/17569	50	500
TRFLEX PG11	11	2/17570	50	500
TRFLEX PG13	13	2/17571	50	500
TRFLEX PG16	16	2/17572	50	400
TRFLEX PG21	21	2/17573	50	500
TRFLEX PG29	29	2/17574	50	500
TRFLEX PG36	36	2/17575	50	150
TRFLEX PG48	48	2/17576	10	50





Basor Electric S.A

Avenida Alcodar 45
46701 Gandia (Valencia)
Teléfono: +34 96 287 66 95
www.basor.com
basor@basor.com