



3E Basor
CABLE TRAY SPECIALIST

**DATA
CENTER**

*Centros de
procesamiento
de datos*

Different works, different solutions.

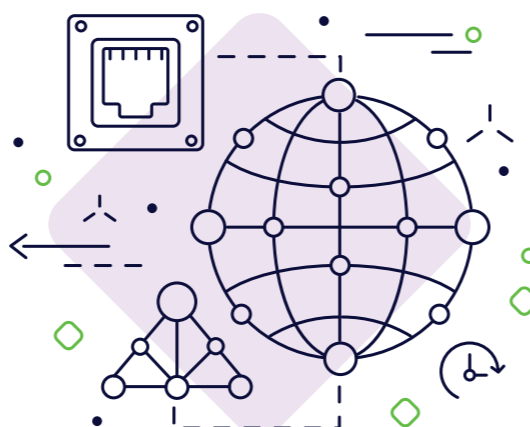
Basor Electric provides an innovative design, high durability and excellent quality to all products in the sector of the **data centers**. Our reputation for technical excellence is rooted in our long-established ability to solve many of the industry's technical challenges. We apply all our expertise working closely with our clients to offer them the best solution and the shortest delivery.

Basor Electric ofrece un diseño innovador, de alta durabilidad y excelente calidad para todos sus productos destinados al sector de los **centros de procesamiento de datos**. Nuestra reputación de excelencia técnica tiene sus raíces en nuestra gran capacidad para resolver los retos técnicos de la industria. Aplicamos toda nuestra experiencia trabajando en estrecha colaboración con nuestros clientes para ofrecerles la mejor solución y los plazos de entrega más cortos.

Cloud computing/Computación en la nube



Global Network / Red global



Index / Índice

Technical addendum <i>Adenda técnica</i>	4
Wire basket trays & fittings <i>Bandejas de hilo y accesorios</i>	8
Cable ladders <i>Bandejas de escalera</i>	21
Special solutions <i>Soluciones especiales</i>	30
Our experience <i>Nuestra experiencia</i>	32

Dashboard



Data base/Bases de datos



Future-ready cable management in data centers/ Sistemas de canalización de cables en centros de datos preparados para el futuro

INTRODUCTION

New trends in cloud information services are rapidly changing the design of data centers. The use of fiber optic cables, higher server densities, and new cabling practices require open, modular solutions for flexible design of data center facilities. BASOR solutions make it possible to always adapt data centers to new technologies.

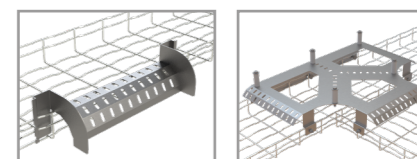
In modern data centers, the provision of IT infrastructure is typically done on two levels. From the top the data cables are laid and from a lower level the power supply is ensured. This ensures that complex structures are seamlessly connected without disturbances. Our systems are designed around these requirements.

FIBER-FRIENDLY CABLE TRAYS & ACCESSORIES

The share of fiber optic cables in all fields of information technology and telecommunications is increasing rapidly. Due to the high sensitivity of these cables, the fiber optic cabling system requires smooth cable runs for uninterrupted and reliable signal quality. BASOR product series for data centers are specially designed for the installation of fiber optic cables. The priority of this extremely flexible system is that the cable laying is carried out with the utmost care, observing the allowable bending radius.

The system dimensions are optimally matched and allow data center cable routing systems to function regardless of the number of cables:

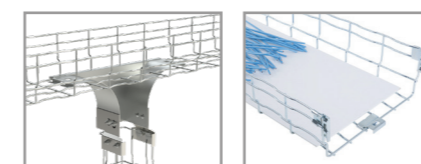
- Quick installation of accessories without nuts & bolts.
- Cable outlets can be retrofitted without cutting and maintaining wide radius bends.



The range includes specialized accessories suitable for fiber optic cabling installations, including rounded corners; cable drops; range of preformed pieces for horizontal and vertical changes of direction with an optimal design of bending radius of fiber optic cables; bottom liners and custom powder coated pathways.

INTRODUCCIÓN

Las nuevas tendencias en los servicios de información en la nube están cambiando rápidamente el diseño de los centros de datos. El uso de cables de fibra óptica, las mayores densidades de servidores, y las nuevas prácticas de cableado requieren soluciones modulares y abiertas para el diseño flexible de instalaciones en centros de datos. Las soluciones de BASOR permiten adaptar siempre los centros de datos a las nuevas tecnologías.



BANDJEAS Y ACCESORIOS ÓPTIMOS PARA LA FIBRA ÓPTICA

La parte proporcional de cables de fibra óptica en todos los campos de la tecnología de la información y las telecomunicaciones está aumentando con rapidez. Debido a la elevada sensibilidad de estos cables, el sistema de tendido de la fibra óptica requiere trayectos de cables suaves para una calidad de señal confiable e ininterrumpida.

Las series de productos BASOR para centros de datos están especialmente diseñadas para la instalación de cables de fibra óptica. La prioridad de este sistema extremadamente flexible es que el tendido de cables se realice con sumo cuidado observando los radios de curvatura permitidos. Las dimensiones del sistema se combinan de forma óptima y permiten que los sistemas de tendido de cables de los centros de datos funcionen indiferentemente de la cantidad de cables:

- Instalación de accesorios rápida sin tornillos.
- Las salidas de cables pueden conectarse con posterioridad sin realizar cortes y manteniendo los radios de curvatura.

La gama incluye accesorios especializados adecuados para instalaciones de cableado de fibra óptica, incluidas esquinas redondeadas; bajadas de cables; gama de piezas preformadas para cambios de dirección horizontales y verticales con un diseño óptimo de radios de curvatura de cables de fibra óptica; fondo sólido interior liso y bandejas pintadas a medida

Technical addendum

Adenda técnica

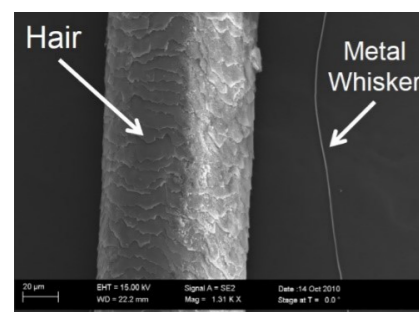
Security in the data storage industry is critical. These are facilities that are always classified as mission critical, where continuity of service prevails over other considerations. Any risk may affect the information stored and the corporate image.

La seguridad en el sector del almacenamiento de datos es fundamental. Se trata de instalaciones catalogadas siempre como de misión crítica, donde la continuidad del servicio prevalece sobre otras consideraciones. Cualquier riesgo, puede afectar a la información almacenada y a la imagen corporativa.

Zinc whiskers in Data Centers / Los "zinc whiskers" en Centros de Datos

INTRODUCTION

So-called "zinc whiskers" are tiny, microscopic filaments that can appear on the surface of zinc-plated metals commonly found in data centers. For example, raised floor tiles, cabinets and servers, floor supports, structural elements., or in cable runs.



Cabling trays in alternative finishes such as hot dip galvanizing, powder coating or stainless steel are a partial answer, since it is more advisable to monitor the materials inside the electronic equipment and the air filtration of the enclosure.

This phenomenon has been known since the 1950s, when was discovered on parts with cadmium or tin coatings ("tin whiskers") in telephone and aerospace equipment in which, due to the small distances between components, they could produce short circuits or other failures.

This phenomenon does not have a fully known origin, possibly due to the internal stress of the coating that, in some circumstances, causes metal diffusion in the granular structure, and the growth of the "whiskers" over time. If these filaments are detached from surfaces and released into the air in the room, they can be transported through ventilation systems to microelectronics within data center equipment. The problems they create are micro-sized short circuits, voltage variances, or system resets.

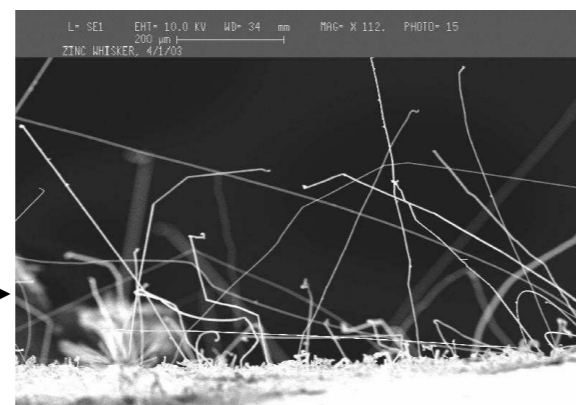
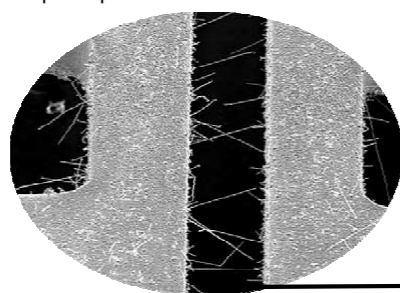
One way to counteract zinc whiskers is to minimize materials that can act as a host for them to grow (under the floor, in cabinets, racks, framing, or cable runs).

It is interesting to see that most manufacturers of servers, switches and other electronic equipment for data center, see the risk of the zinc whisker to be very small and continue to use and promote the use of zinc plated chassis, hardware, mounting slides and other components directly inside electronic equipment that zinc whiskers are supposed to be able to damage, and still fully warrantee the installation.

INTRODUCCIÓN

Los llamados "zinc whiskers" son pequeños filamentos microscópicos que pueden aparecer en la superficie de los metales con recubrimiento electrolítico de cinc que se encuentran comúnmente en centros de datos. Por ejemplo, en suelos técnicos, armarios y servidores, los soportes del suelo, elementos estructurales, o en las canalizaciones de cables.

Example of pieces with whisker :



Las bandejas de cableado en acabados alternativos como el galvanizado en caliente, la pintura en polvo o el acero inoxidable son una respuesta parcial, ya que es más recomendable vigilar los materiales del interior de los equipos electrónicos y la filtración del aire del recinto.

Desde la década de 1950 se conoce este fenómeno, que inicialmente se estudió en piezas con recubrimientos de cadmio o estaño ("tin whiskers") en equipos telefónicos y aeroespaciales en que, por las pequeñas distancias entre componentes, llegaban a producir cortocircuitos u otros fallos. Es un fenómeno de origen no totalmente conocido, posiblemente debido a la tensión interna del recubrimiento que, en algunas circunstancias, provoca una difusión del metal en la estructura granular, y el crecimiento de los "whiskers" con el paso del tiempo.

Si estos filamentos se llegan a desprender de las superficies y se liberan al aire del recinto, pueden ser transportados por los sistemas de ventilación hasta llegar a la microelectrónica dentro de los equipos de los centros de datos. Los problemas que crean son cortocircuitos de tamaño micro, variaciones de voltaje o reinicios del sistema.

Una forma de contrarrestar los filamentos de zinc es minimizar los materiales que pueden actuar como huésped para que crezcan (bajo el suelo, en los armarios, armazones, o la conducción de cables).

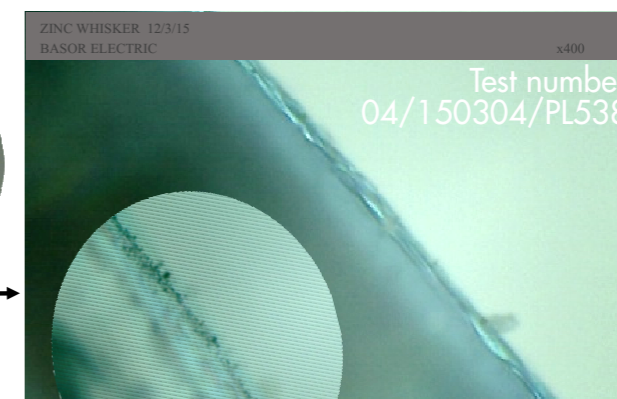
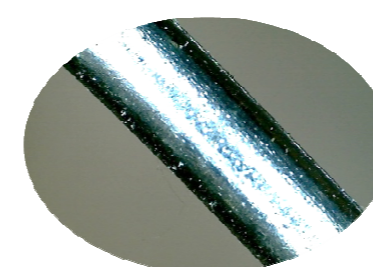
Es interesante ver que la mayoría de los fabricantes de servidores, conmutadores y otros equipos electrónicos para centros de datos, consideran muy bajo el riesgo de los filamentos de zinc y continúan usando y promoviendo el uso de chasis, tornillería, perfiles de montaje y otros componentes electrocincados directamente dentro de los equipos electrónicos a que los filamentos de zinc se supone que pueden dañar, y siguen garantizando completamente la instalación.

Basor's experience with Zinc whiskers / Experiencia de Basor con los "zinc whiskers"

DECADES WITH NO INCIDENTS

BASOR has provided thousands of meters of electrozinc plated wire mesh cable tray for decades for thousands of facilities, with no recorded incidents of zinc whiskers.

Pieces of BASOR at the test:



The type of non-alkaline electrozinc plating, and specific process used by BASOR, has been tested in laboratory to verify the appearance of this phenomenon.

The microscopy tests carried out on electrozinc plated BASOR products have concluded that the presence of "zinc whiskers" is not appreciated, even after several years.

According to the Laboratory Test number 04/150304/PL538 made by a third part approval, the conclusions are: "According to the comparative test, the pictures obtained at 400x indicates NO PRESENCE of whisker".

Given the concerns of customers about the possible danger for very sensitive equipment, we can offer other alternatives totally free of "zinc whiskers", as they do not present electrozinc plated exterior surfaces, such as:

- Basorfil hot-dip galvanized wire mesh cable tray, not electrozinc plated
- Basorfil wire mesh cable tray with EZ1000 coating, or powder coating, painted
- Nonmetallic PVC cable trays Basorplast BPE

DÉCADAS SIN INCIDENTES

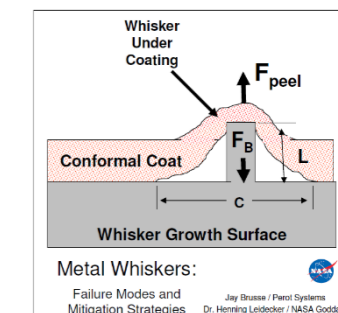
BASOR ha entregado miles de metros de bandeja de hilo electrocincada desde hace décadas para miles de instalaciones, sin haber sido reportado ningún problema debido a la aparición de "zinc whiskers"

El tipo de electrocincado no alcalino, y su proceso específico utilizado por BASOR, ha sido testado en laboratorio, para comprobar la aparición de este fenómeno. Las pruebas de microscopía realizadas sobre productos BASOR electrocincados, han concluido que no se aprecia la presencia de "zinc whiskers", incluso tras varios años.

Según el Ensayo de Laboratorio número 04/150304 / PL538 realizado por un ente externo homologado, las conclusiones son: "Según el ensayo comparativo, las imágenes obtenidas a 400x indican NO PRESENCIA de whiskers".

Ante las preocupaciones de clientes sobre el posible peligro para equipos muy sensibles, podemos ofrecer otras alternativas totalmente libres de "zinc whiskers", por no presentar superficies exteriores electrocincadas, como:

- Bandejas de hilo Basorfil galvanizado en caliente GC, no electrocincada
- Bandejas de hilo Basorfil con recubrimiento EZ1000, o pintura
- Bandejas aislantes de PVC Basorplast BPE / BPI



Wire basket trays & fittings

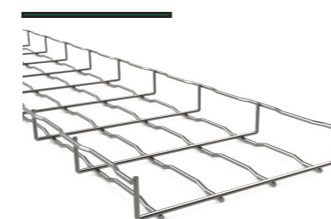
Basorfil is the ideal product for supporting cable in the rapidly changing voice/data/video market. Crowded spaces and changing technologies in data centers, data closet, tenant areas, data backbones make Basorfil the ideal cable management solution. Turns, Tee's, rises and drops all can be quickly made on site to meet your specific project needs. Basorfil manages UTP cables, fiber optics, video, alarm and power cables anywhere they are needed.

Bandejas de hilo

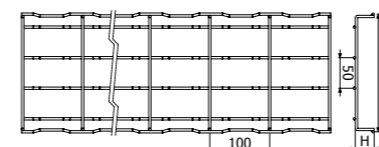
Nuestra línea de bandejas Basorfil es el producto ideal para soportar los cables controladores en el cambiante sector de la voz, datos y video. Los espacios de almacenamiento suelen estar abarrotados, unido a que las tecnologías aplicadas en los centros de datos son cambiantes, tanto en los armarios de datos, en las áreas de almacenamiento y en las redes troncales de datos, por lo tanto, la versatilidad de la bandeja de hilo, hace de Basorfil la solución de gestión de cables ideal. Giros, tees, subidas y bajadas se pueden realizar rápidamente en obra para satisfacer las necesidades específicas de su proyecto.

Basorfil gestiona cables UTP, fibra óptica, vídeo, alarmas y cables de alimentación en cualquier lugar que se necesiten.

BFR35



L = 10 FT / 3 m



	Width		FINISH
	inch	mm	REF. EZ
BFR 100x35	4"	100	203616
BFR 150x35	6"	150	203617
BFR 200x35	8"	200	203618
BFR 300x35	12"	300	203619

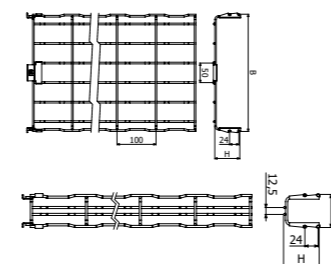
🔧 2x 📌 2/4364 EZ



BF2R 65



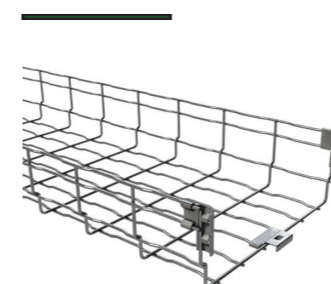
L = 10 FT / 3 m



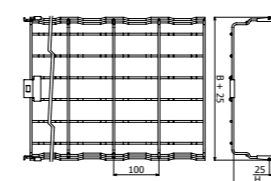
	Width		Centerpiece	UTP CAT 6	FINISH
	inch	mm	units	(0.24')	REF. EZ
BF2R 60x65	2"	60	0	-	207389
BF2R 100x65	4"	100	0	74	207248
BF2R 150x65	6"	150	0	124	207249
BF2R 200x65	8"	200	0	171	207250
BF2R 300x65	12"	300	1	267	207251
BF2R 400x65	16"	400	1	364	207394
BF2R 450x65	18"	450	2	410	209989
BF2R 500x65	20"	500	2	459	207395
BF2R 600x65	24"	600	2	555	207396



BF2R 105



L = 10 FT / 3 m



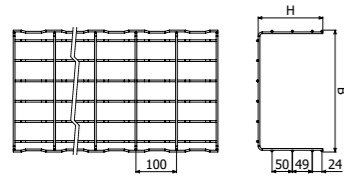
	Width		Centerpiece	UTP CAT 6	FINISH
	inch	mm	units	(0.24')	REF. EZ
BF2R 100x105	4"	100	0	139	207914
BF2R 150x105	6"	150	0	229	207915
BF2R 200x105	8"	200	0	318	207397
BF2R 300x105	12"	300	1	498	207398
BF2R 400x105	16"	400	1	679	207399
BF2R 450x105	18"	450	2	768	209990
BF2R 500x105	20"	500	2	859	207400
BF2R 600x105	24"	600	2	1038	207401



BFR 150



L = 10 FT / 3 m



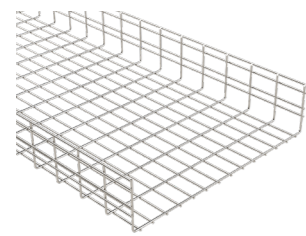
	Width		UTP CAT 6 (0.24")	FINISH
	inch	mm		REF. EZ
BFR 200x150	8"	200	490	209549
BFR 300x150	12"	300	754	209550
BFR 400x150	16"	400	1018	209551
BFR 450x150	18"	450	1158	209991
BFR 500x150	20"	500	1281	209552
BFR 600x150	24"	600	1545	209553

🔧 8"-12" (200-300mm) 4x 🪛 2/4364 EZ

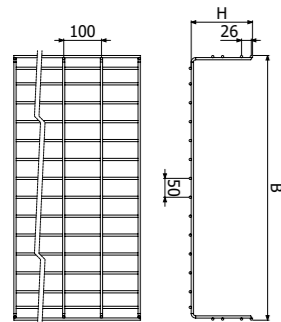
🔧 16"-24" (200-300mm) 6x 🪛 2/4364 EZ



BF



L = 10 FT / 3 m

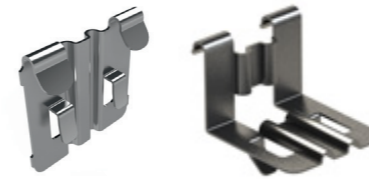


	Width		FINISH
	inch	mm	REF. EZ
BF 700x150	28	700	2018784
BF 900x65	36	900	2018785
BF 900x105	36	900	2018786
BF 900x150	36	900	2018787

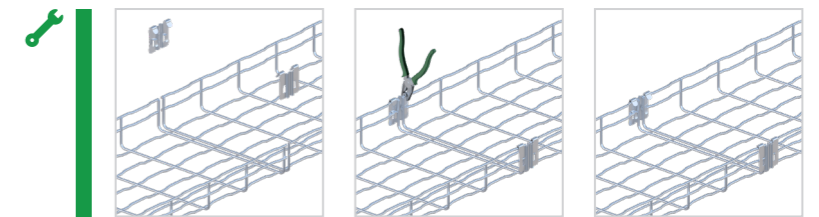
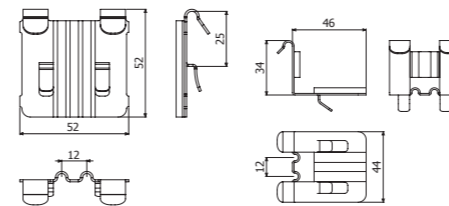
🔧 6x 🪛 2/4364 EZ



QUICK SPICE



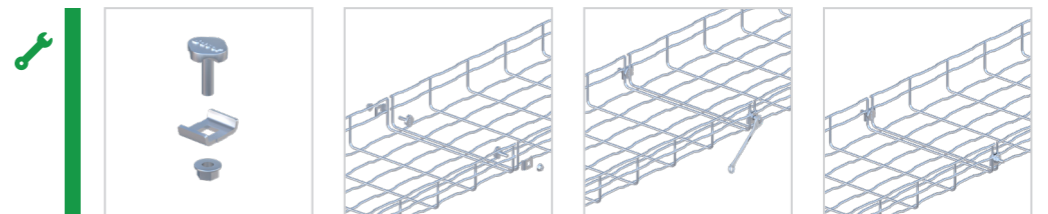
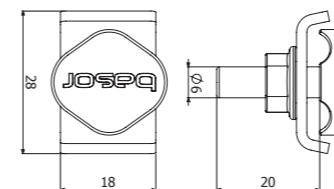
	FINISH	FINISH
	REF. EZ	REF. HDG
	UR BFR H35/65 E-BFR H105	206217
UR BFR H35	207271	207272



BOLT STAPLE SET



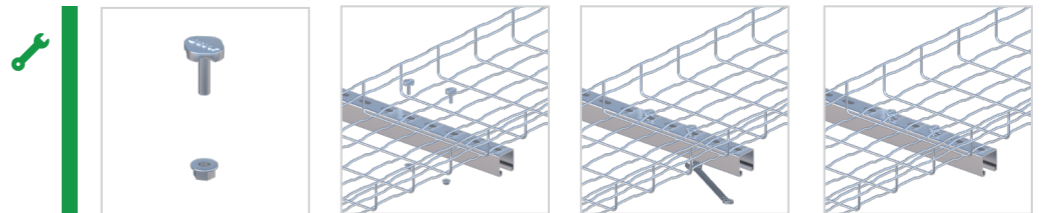
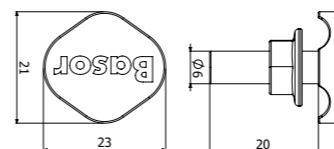
	FINISH	FINISH	FINISH	
	REF. EZ	REF. HDG	REF. SS304	REF. SS316
CGBF	204364	204360	204915	205358



BF BOLT NUT SET

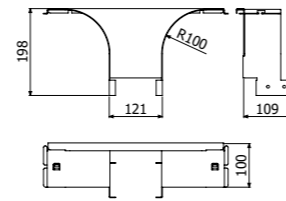


	FINISH	FINISH	FINISH	
	REF. EZ	REF. HDG	REF. SS304	REF. SS316
CTBF	204362	207132	204923	208229

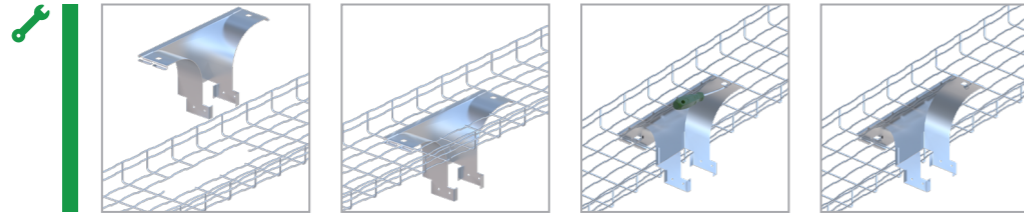
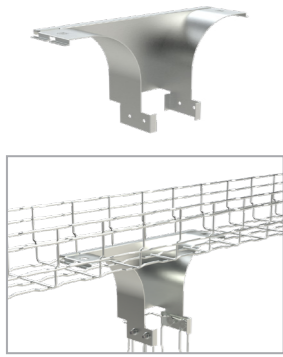


DROP OUT BJCBFR

Width	FINISH
mm	REF. PG
200	218813



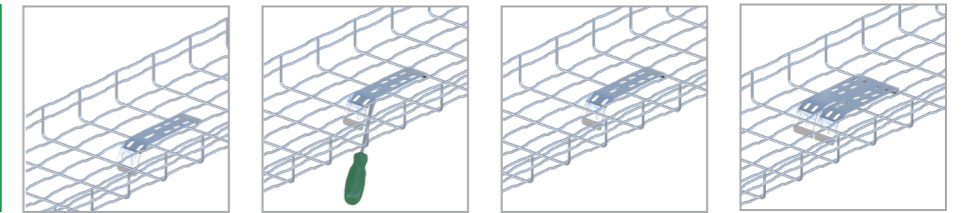
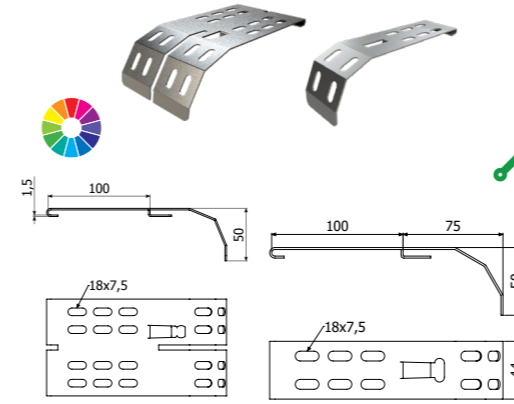
4x 2/4364 EZ



DROP-OUT PLATE

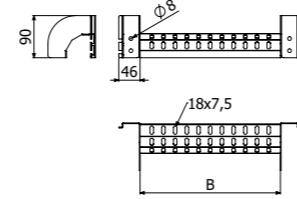
FINISH	FINISH
REF. PG	REF. HDG
206451	206452
209807	-

BF/BFR Drop-Out Plate
BF/BFR Mini Drop-Out Plate

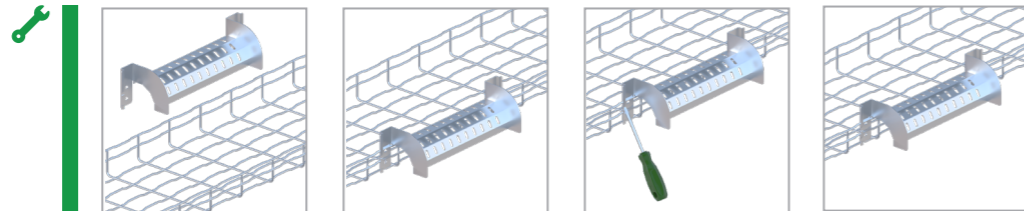
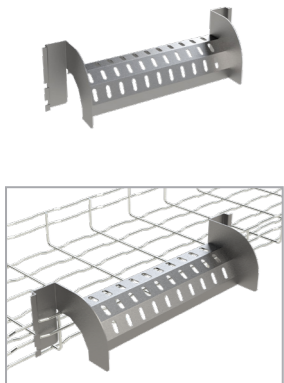


DROP OUT SIDEWAY BJCL

Width	FINISH
mm	REF. PG
200	218777
300	218778
450	218779
600	218780



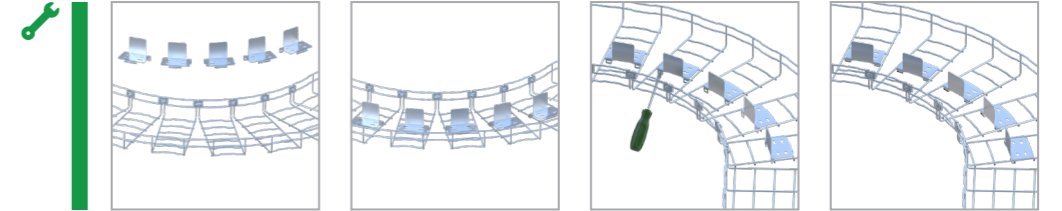
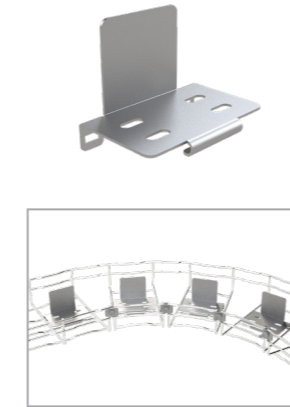
2/4364 EZ



SINGLE DIVIDER SSBFR

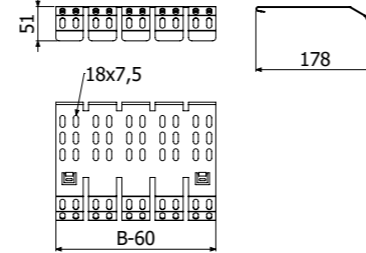
Width	FINISH
mm	REF. PG
65	218781
105	218782
150	218783

2/4364 EZ

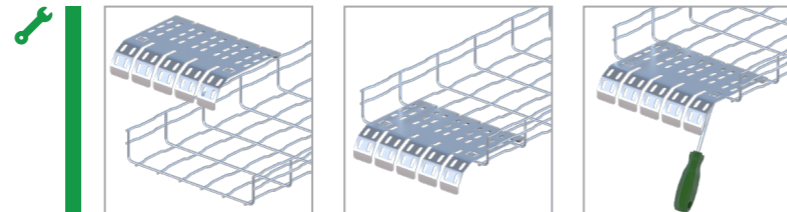
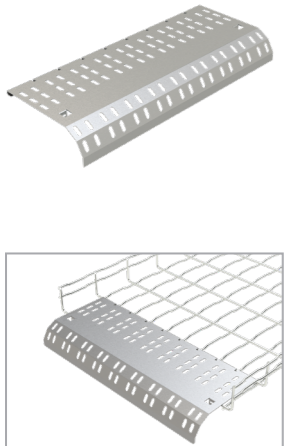


CROSS DROP OUT CDO

Width	FINISH
mm	REF. PG
200	902508
300	902509
400	902510
450	902511
500	902512
600	902513
700	902514
900	902515



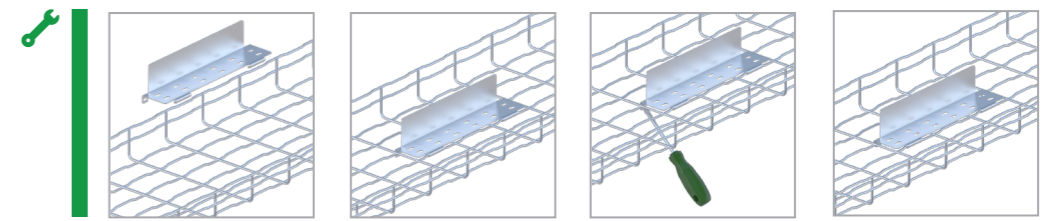
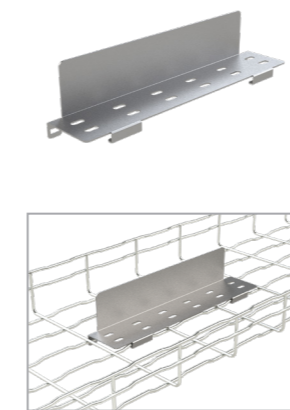
2/4364 EZ



TRIPLE DIVIDERS STBFR

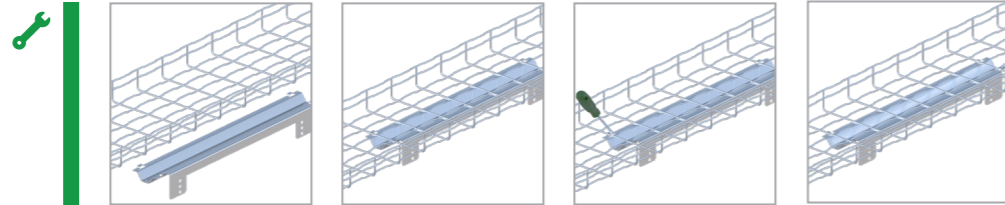
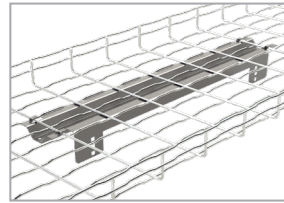
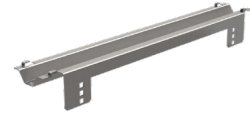
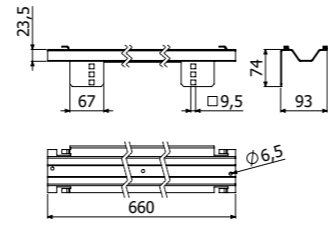
Width	FINISH
mm	REF. PG
65	902516
105	902517
150	902518

2/4364 EZ



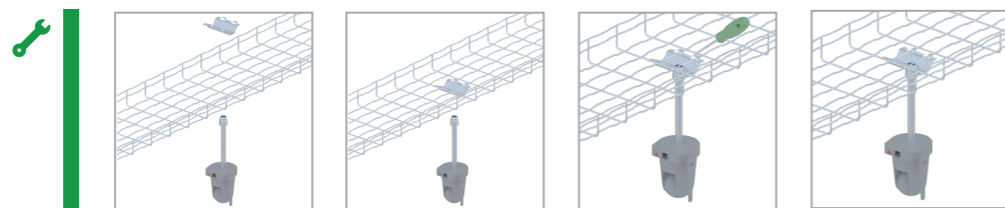
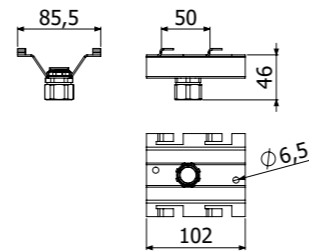
1U SWITCH SUPPORT

1U Switch Support	
FINISH	
REF. PG	U/0035



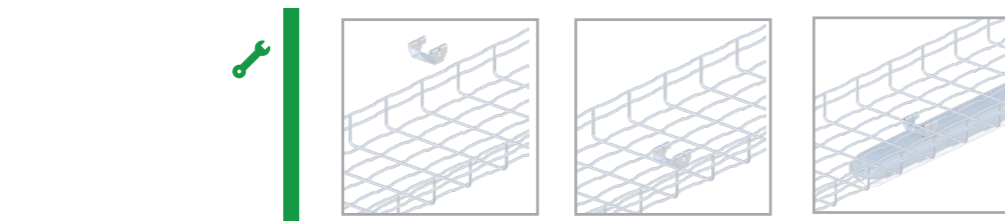
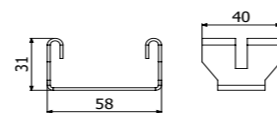
CAMERA SUPPORT

Camera Support	
FINISH	
REF. PG	U/0036



SUPPORT SFL 30

Support SFL 30	
FINISH	
REF. PG	218822



FSBFR



L = 10 FT / 3 m



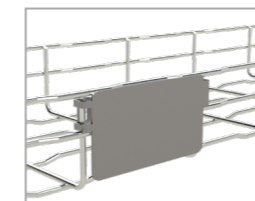
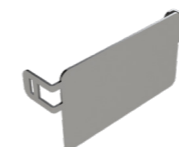
PVC LINER



L = 10 FT / 3 m

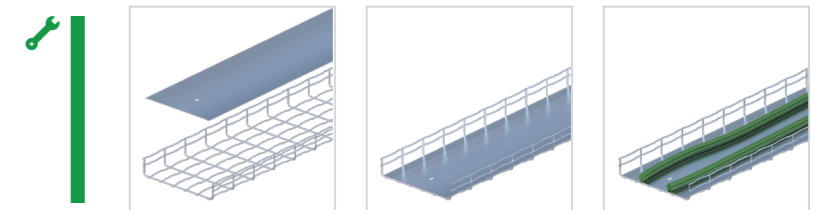


DESIGNATION PLATE DP



	Width		FINISH REF. PG
	inch	mm	
FSBFR 100	4"	100	209658
FSBFR 150	6"	150	209659
FSBFR 200	8"	200	209660
FSBFR 300	12"	300	209661
FSBFR 400	16"	400	209662
FSBFR 450	18"	450	U/0007
FSBFR 500	20"	500	209663
FSBFR 600	24"	600	209664

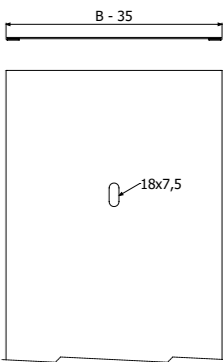
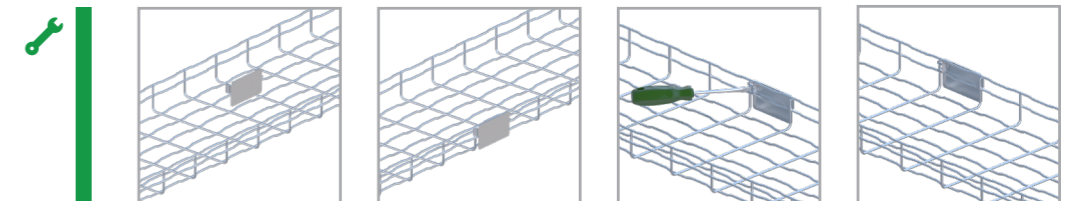
1x 2/4356 EZ + 1x 2/0337 EZ



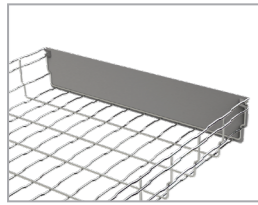
	Width		FINISH REF. PVC
	inch	mm	
Wider Liner 150	6"	150	☎
Wider Liner 300	12"	300	
Wider Liner 400	16"	400	
Wider Liner 600	24"	600	
Wider Liner 150 (Bottom Only)	6"	150	
Wider Liner 300 (Bottom Only)	12"	300	
Wider Liner 400 (Bottom Only)	16"	400	
Wider Liner 500 (Bottom Only)	20"	500	
Wider Liner 600 (Bottom Only)	24"	600	

☎ = Upon Request/bajo pedido

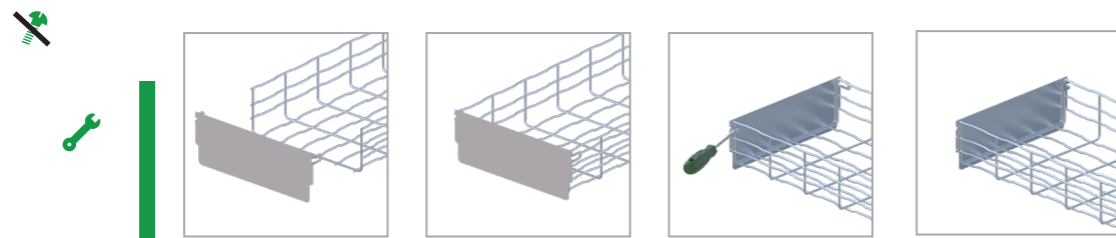
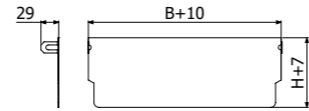
Designation Plate DP	
FINISH	
REF. PG	902519



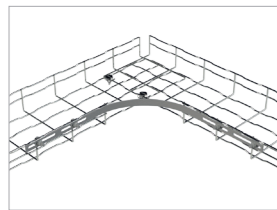
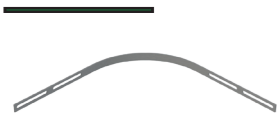
BLIND END PLATE



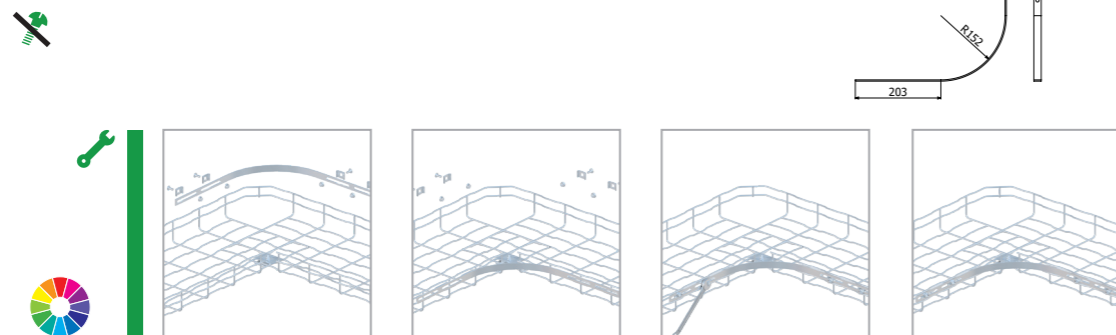
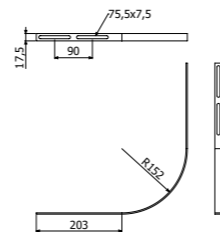
	FINISH
	REF. PG
Blind End 100x65	U/0044
Blind End 150x65	U/0043
Blind End 200x65	U/0042
Blind End 300x65	U/0041
Blind End 400x65	U/0040
Blind End 450x65	U/0039
Blind End 500x65	U/0038
Blind End 600x65	U/0037
Blind End 100x105	U/0058
Blind End 150x105	U/0057
Blind End 200x105	U/0056
Blind End 300x105	U/0055
Blind End 400x105	U/0054
Blind End 450x105	U/0053
Blind End 500x105	U/0052
Blind End 600x105	U/0051



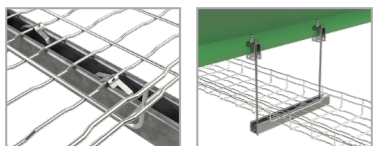
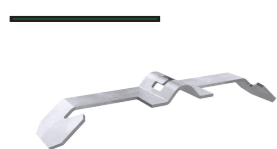
BT 90 KIT



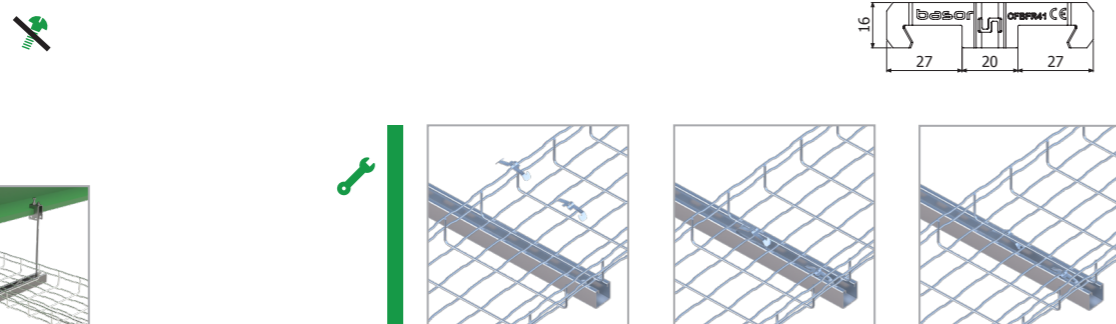
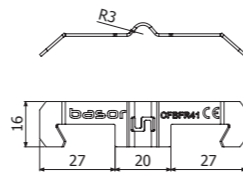
	FINISH
	REF. PG
BT 90 Kit	U/008



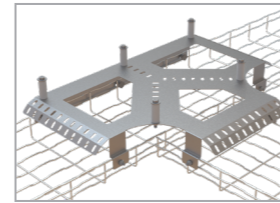
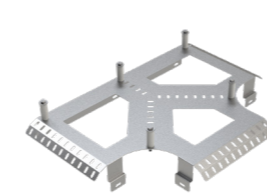
STRUT CONNECTION STRIP



	FINISH	
	REF. SS304	REF. SS316
CFBFR41	2/10284	2/18567

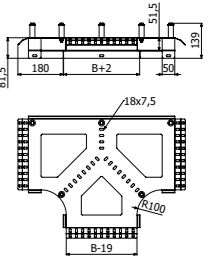


TEE BRIDGE TEPBFR

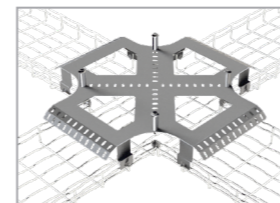
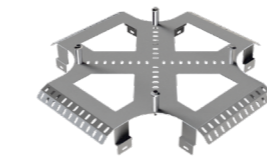


	Width	FINISH
	mm	REF. PG
Tee bridge TEPBFR 150x65/150	150	218767
Tee bridge TEPBFR 200x65/150	200	218768
Tee bridge TEPBFR 300x65/150	300	218769
Tee bridge TEPBFR 400x65/150	400	218770
Tee bridge TEPBFR 600x65/150	600	218771
Tee bridge TEPBFR 700x150	700	218788
Tee bridge TEPBFR 900x150	900	218789
Tee bridge TEPBFR 150x105	150	218772
Tee bridge TEPBFR 200x105	200	218773
Tee bridge TEPBFR 300x105	300	218774
Tee bridge TEPBFR 400x105	400	218775
Tee bridge TEPBFR 600x105	600	208776

7x 2/4362 EZ

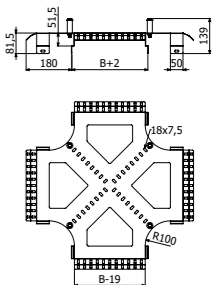


CROSS BRIDGE CRPBFR

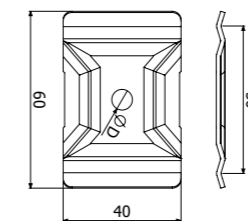
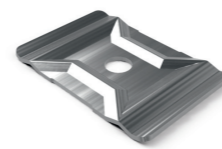


	Width	FINISH
	mm	REF. PG
Cross Bridge CRPBFR 150x105	150	223083
Cross Bridge CRPBFR 200x105	200	223084
Cross Bridge CRPBFR 300x105	300	223085
Cross Bridge CRPBFR 400x105	400	223086
Cross Bridge CRPBFR 600x105	600	223087

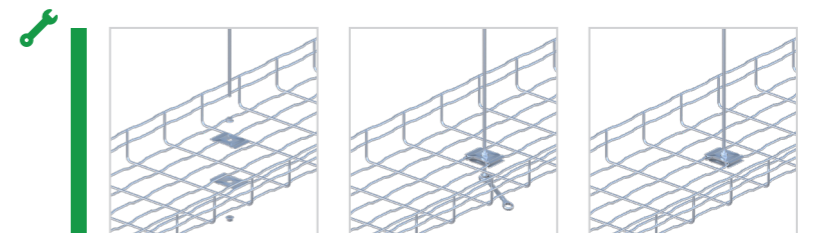
8x 2/4362 EZ



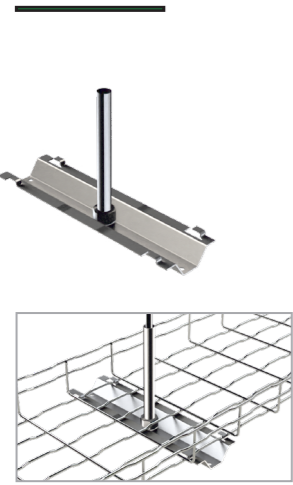
SSC CENTRAL SUSPENSION



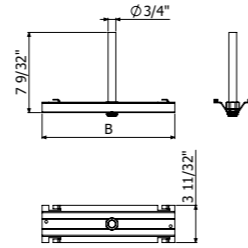
	FINISH	FINISH	FINISH	
	REF. EZ	REF. HDG	REF. SS304	REF. SS316
SSC	202064	200363	200373	218553



CENTER HANGER



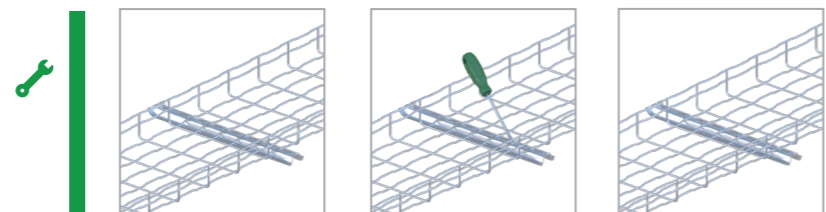
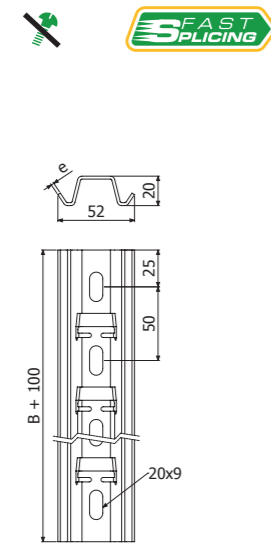
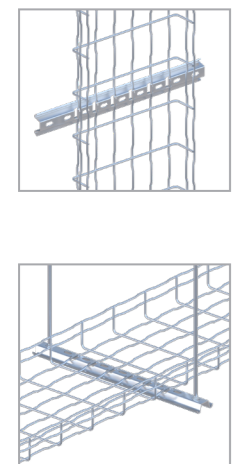
	Length		FINISH
	inch	mm	REF. PG
Center Hanger Support 100/150/200	4"	100	U/0029
Center Hanger Support 300/400	6"	150	U/0030
Center Hanger Support 450	8"	200	U/0031
Center Hanger Support 500/600	12"	300	U/0032



C-SVO SUPPORT PROFILE



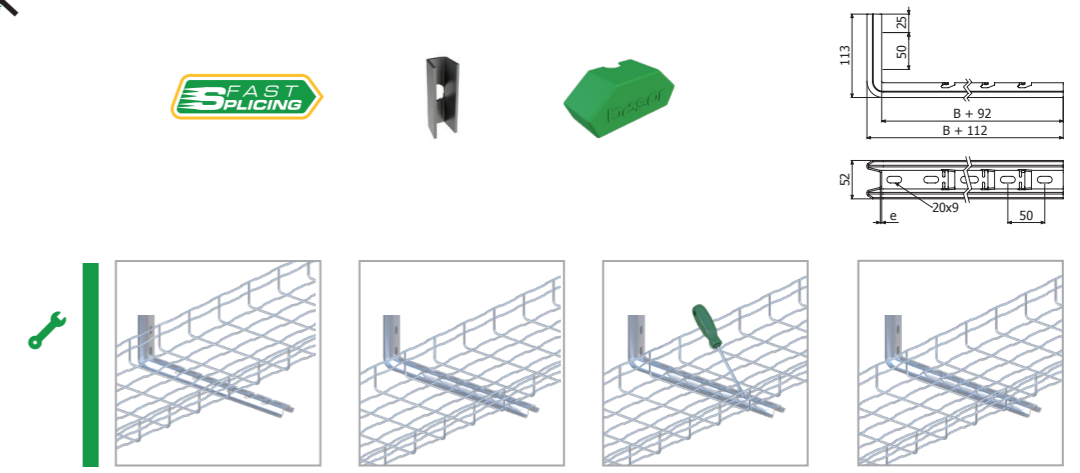
	Width		SWL	FINISH	FINISH	FINISH	
	inch	mm	Kg	REF. PG	REF. HDG	REF. SS304	REF. SS316
C-SVO 100	4"	100	250	203630	206280	206285	218421
C-SVO 150	6"	150	200	201073	201078	201087	218422
C-SVO 200	8"	200	294	201074	201079	201088	218423
C-SVO 300	12"	300	235	201076	201081	201090	218424
C-SVO 400	16"	400	161	203629	205719	206286	218425
C-SVO 450	18"	450	115	201075	-	-	-
C-SVO 500	20"	500	115	201077	201082	206287	218426
C-SVO 600	24"	600	87	205941	205720	206288	218427
C-SVO 3M	-	-	-	201101	207436	-	-



L BRACKET WALL



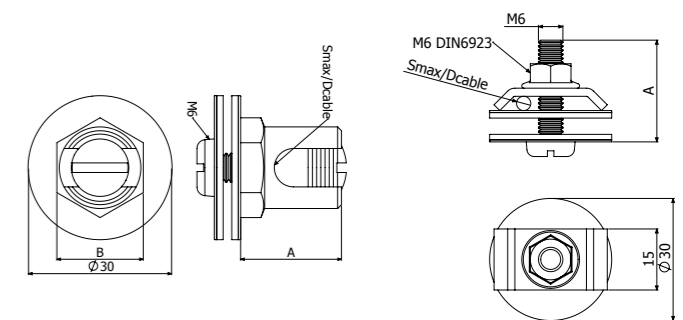
	Width		SWL	FINISH	FINISH	FINISH	
	inch	mm	Kg	REF. PG	REF. HDG	REF. SS304	REF. SS316
C-SHO 100	4"	100	105	207230	207239	207490	217824
C-SHO 150	6"	150	100	207231	207240	207491	218415
C-SHO 200	8"	200	81	207232	207241	207492	217825
C-SHO 300	12"	300	45	207233	207242	207493	217826
SHO/SHOT pc				206240	206318	-	218479



GROUNDING LUG



	AWG		ITN
		mm ²	REF. ITN
GROUNDING TT 35 M6x0.47"	2	35	206796
GROUNDING TT 95 M6x0.47"	8	95	206797
TTL 10-35	2	35	208189





Cable ladders/ Bandejas de escalera

Telecommunication runway is an important component in a well-planned network. Basor Cable Ladder Runway is designed to support telecommunication or power cables in equipment rooms and pathways that connect to and support telecommunication racks or cabinets. A wide selection of supports and accessories give every installation a professional look.

Bandejas de escalera

El cableado de telecomunicaciones bien ordenado es un componente importante en una red bien planificada. Las bandejas de escalera de Basor están diseñadas para soportar cables de telecomunicaciones o potencia en salas de equipos y que se conectan y soportan racks de telecomunicaciones. Una amplia selección de soportes y accesorios dan a cada instalación un aspecto profesional en cada lugar donde se necesiten.

FE LADDER RACK



FE LADDER RACK



FE HORIZONTAL BEND



FE HORIZONTAL BEND



MODEL	WIDTH		HIGH	HIGH	HIGH
	inch	mm	60 mm	75 mm	100 mm
FE HDG	4"	100	200749	200865	200872
	6"	150	200750	200866	200873
	8"	200	200751	200867	200874
	12"	300	200752	200868	200875
	16"	400	200753	200869	200876
	20"	500	200754	200870	200877
	24"	600	200755	200871	200878

MODEL	WIDTH		HIGH	HIGH
	inch	mm	120 mm	150 mm
FE HDG	4"	100	-	-
	6"	150	206854	206860
	8"	200	206855	206861
	12"	300	206856	206862
	16"	400	206857	206863
	20"	500	206858	206864
	24"	600	206859	206865

MODEL	WIDTH		HIGH	HIGH	HIGH
	inch	mm	60 mm	75 mm	100 mm
CPFE HDG	4"	100	217634	200887	200895
	6"	150	217635	200888	200896
	8"	200	217636	200889	200897
	12"	300	217637	200890	200898
	16"	400	217638	200891	200899
	20"	500	217639	200892	200900
	24"	600	217640	200893	200901

🔧 4x 🛠️ 206792 HDG

MODEL	WIDTH		HIGH	HIGH
	inch	mm	120 mm	150 mm
CPFE HDG	4"	100	-	-
	6"	150	206880	206886
	8"	200	206881	206887
	12"	300	206882	206888
	16"	400	206883	206889
	20"	500	206884	206890
	24"	600	206885	206891

🔧 4x 🛠️ 206792 HDG / 8x 🛠️ 206792 HDG (H150)

FE INSIDE BEND



MODEL	WIDTH		HIGH	HIGH	HIGH
	inch	mm	60 mm	75 mm	100 mm
CCFE HDG	4"	100	217690	204794	200805
	6"	150	217691	204596	200806
	8"	200	217692	204548	200807
	12"	300	217693	204549	200808
	16"	400	217694	200802	200809
	20"	500	217695	200803	200810
	24"	600	217696	200804	200811

4x 206792 HDG + 2X JUFE

FE TE BEND



MODEL	WIDTH		HIGH	HIGH	HIGH
	inch	mm	60 mm	75 mm	100 mm
TEFE HDG	4"	100	217781	200930	200937
	6"	150	217782	200931	200938
	8"	200	217783	200932	200939
	12"	300	217784	200933	200940
	16"	400	217785	200934	200941
	20"	500	217786	200935	200942
	24"	600	217787	200936	200943

4x 206792 HDG

FE INSIDE BEND



MODEL	WIDTH		HIGH	HIGH
	inch	mm	120 mm	150 mm
CCFE HDG	4"	100	-	-
	6"	150	206892	206898
	8"	200	206893	206899
	12"	300	206894	206900
	16"	400	206895	206901
	20"	500	206896	206902
	24"	600	206897	206903

4x 206792 HDG / 8x 206792 HDG (H150) + 2X JUFE

FE TE BEND



MODEL	WIDTH		HIGH	HIGH
	inch	mm	120 mm	150 mm
TEFE HDG	4"	100	-	-
	6"	150	206916	206922
	8"	200	206917	206923
	12"	300	206918	206924
	16"	400	206919	206925
	20"	500	206920	206926
	24"	600	206921	206927

4x 206792 HDG / 8x 206792 HDG (H150)

FE OUTSIDE BEND



MODEL	WIDTH		HIGH	HIGH	HIGH
	inch	mm	60 mm	75 mm	100 mm
CXFE HDG	4"	100	217746	200909	200916
	6"	150	217747	200910	200917
	8"	200	217748	200911	200918
	12"	300	217749	200912	200919
	16"	400	217750	200913	200920
	20"	500	217751	200914	200921
	24"	600	217752	200915	200922

4x 206792 HDG + 2X JUFE

FE CROSS BEND



MODEL	WIDTH		HIGH	HIGH	HIGH
	inch	mm	60 mm	75 mm	100 mm
CRFE HDG	4"	100	217795	200951	200958
	6"	150	217796	200952	200959
	8"	200	217797	200953	200960
	12"	300	217798	200954	200961
	16"	400	217799	200955	200962
	20"	500	217800	200956	200963
	24"	600	217801	200957	200964

4x 206792 HDG

FE OUTSIDE BEND



MODEL	WIDTH		HIGH	HIGH
	inch	mm	120 mm	150 mm
CXFE HDG	4"	100	-	-
	6"	150	206904	206910
	8"	200	206905	206911
	12"	300	206906	206912
	16"	400	206907	206913
	20"	500	206908	206914
	24"	600	206909	206915

4x 206792 HDG / 8x 206792 HDG (H150) + 2X JUFE

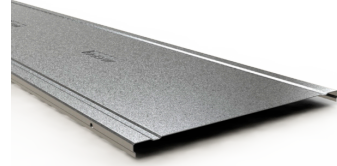
FE CROSS BEND



MODEL	WIDTH		HIGH	HIGH
	inch	mm	120 mm	150 mm
CRFE HDG	4"	100	-	-
	6"	150	206928	206934
	8"	200	206929	206935
	12"	300	206930	206936
	16"	400	206931	206937
	20"	500	206932	206938
	24"	600	206933	206939

4x 206792 HDG / 8x 206792 HDG (H150)

FE COVER



MODEL	WIDTH		TFE	TFEL	T2AFE
	inch	mm			
COVER HDG	4"	100	204937	210000	209778
	6"	150	204472	210001	209779
	8"	200	204473	210002	209780
	12"	300	203579	210003	209781
	16"	400	204430	210004	209782
	20"	500	204509	210005	209783
	24"	600	204494	210006	209784

FE JOINTS & SCREWS



MODEL	TYPE	JUFE	JUFE-A	JUFE-B
JOINTS HDG	2 1/2" 60	200854	200857	200860
	4" 100	200856	200859	200862
	4 5/7" 120	206940	206942	206944
	6" 150	206941	206943	206945

MODEL	TYPE	B1	B2
SCREWS	HDG	206826	206792
	S. STEEL 304	204925	205392

FE REDUCTION



MODEL	WIDTH		HIGH	HIGH	HIGH	HIGH
	inch	mm	75 mm	100 mm	120 mm	150 mm
REFE HDG	2"	50	206803	206807	206954	206958
	4"	100	206804	206808	206955	206959
	6"	150	206805	206809	206956	206960
	8"	200	206806	206810	206957	206961

FE BJC



MODEL	WIDTH		CODE
	inch	mm	
BJCFE HDG	4"	100	210021
	6"	150	210022
	8"	200	210023
	12"	300	210024
	16"	400	210025
	20"	500	210026
	24"	600	210027

IL LADDER



MODEL	WIDTH		HIGH (100mm)			HIGH (125mm)			HIGH (150mm)		
	inch	mm	(150mm)	(230mm)	(300mm)	(150mm)	(230mm)	(300mm)	(150mm)	(230mm)	(300mm)
IL ALUMINUM NEMA 16A/16C	6"	150	210305	210324	210343	214942	214943	214944	-	-	-
	9"	230	210306	210325	210344	210312	210331	210350	210318	210337	210356
	12"	300	210307	210326	210345	210313	210332	210351	210319	210338	210357
	18"	450	210308	210327	210346	210314	210333	210352	210320	210339	210358
	24"	600	210309	210328	210347	210315	210334	210353	210321	210340	210359
	30"	750	210310	210329	210348	210316	210335	210354	210322	210341	210360
	36"	900	210311	210330	210349	210317	210336	210355	210323	210342	210361

8x 212096 SS304 + 2X JUI

IS LADDER



MODEL	WIDTH		HIGH (100mm)			HIGH (125mm)			HIGH (150mm)		
	inch	mm	(150mm)	(230mm)	(300mm)	(150mm)	(230mm)	(300mm)	(150mm)	(230mm)	(300mm)
IL ALUMINUM NEMA 20A/16B	6"	150	210362	210381	210400	214945	214946	214947	-	-	-
	9"	230	210363	210382	210401	210369	210388	210407	210375	210394	210413
	12"	300	210364	210383	210402	210370	210389	210408	210376	210395	210414
	18"	450	210365	210384	210403	210371	210390	210409	210377	210396	210415
	24"	600	210366	210385	210404	210372	210391	210410	210378	210397	210416
	30"	750	210367	210386	210405	210373	210392	210411	210379	210398	210417
	36"	900	210368	210387	210406	210374	210393	210412	210380	210399	210418

8x 212096 SS304 + 2X JUI

IR LADDER



MODEL	WIDTH		HIGH (100mm)			HIGH (125mm)			HIGH (150mm)		
	inch	mm	(150mm)	(230mm)	(300mm)	(150mm)	(230mm)	(300mm)	(150mm)	(230mm)	(300mm)
IL ALUMINUM NEMA 20B/16C	6"	150	210419	210438	210457	214948	214949	214950	-	-	-
	9"	230	210420	210439	210458	210426	210445	210464	210432	210451	210470
	12"	300	210421	210440	210459	210427	210446	210465	210433	210452	210471
	18"	450	210422	210441	210460	210428	210447	210466	210434	210453	210472
	24"	600	210423	210442	210461	210429	210448	210467	210435	210454	210473
	30"	750	210424	210443	210462	210430	210449	210468	210436	210455	210474
	36"	900	210425	210444	210463	210431	210450	210469	210437	210456	210475

8x 212096 SS304 + 2X JUI

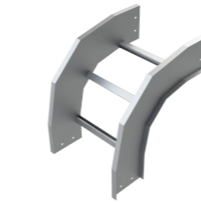
CPI FLAT BEND



MODEL	WIDTH		HIGH (100mm)			HIGH (125mm)			HIGH (150mm)		
	inch	mm	Radius (300mm)	Radius (600mm)	Radius (900mm)	Radius (300mm)	Radius (600mm)	Radius (900mm)	Radius (300mm)	Radius (600mm)	Radius (900mm)
CPI-30°	6"	150	210476	210497	210518	214951	214954	214957	-	-	-
	9"	230	210477	210498	210519	210539	210557	210575	210593	210611	210629
	12"	300	210478	210499	210520	210540	210558	210576	210594	210612	210630
	18"	450	210479	210500	210521	210541	210559	210577	210595	210613	210631
	24"	600	210480	210501	210522	210542	210560	210578	210596	210614	210632
	30"	750	210481	210502	210523	210543	210561	210579	210597	210615	210633
	36"	900	210482	210503	210524	210544	210562	210580	210598	210616	210634
CPI-45°	6"	150	210483	210504	210525	214952	214955	214958	-	-	-
	9"	230	210484	210505	210526	210545	210563	210581	210599	210617	210635
	12"	300	210485	210506	210527	210546	210564	210582	210600	210618	210636
	18"	450	210486	210507	210528	210547	210565	210583	210601	210619	210637
	24"	600	210487	210508	210529	210548	210566	210584	210602	210620	210638
	30"	750	210488	210509	210530	210549	210567	210585	210603	210621	210639
	36"	900	210489	210510	210531	210550	210568	210586	210604	210622	210640
CPI-90°	6"	150	210490	210511	210532	214953	214956	214959	-	-	-
	9"	230	210491	210512	210533	210551	210569	210587	210605	210623	210641
	12"	300	210492	210513	210534	210552	210570	210588	210606	210624	210642
	18"	450	210493	210514	210535	210553	210571	210589	210607	210625	210643
	24"	600	210494	210515	210536	210554	210572	210590	210608	210626	210644
	30"	750	210495	210516	210537	210555	210573	210591	210609	210627	210645
	36"	900	210496	210517	210538	210556	210574	210592	210610	210628	210646

8x 212096 SS304 + 2X JUI

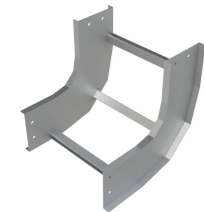
CXI OUTSIDE BEND



MODEL	WIDTH		HIGH (100mm)			HIGH (125mm)			HIGH (150mm)		
	inch	mm	Radius (300mm)	Radius (600mm)	Radius (900mm)	Radius (300mm)	Radius (600mm)	Radius (900mm)	Radius (300mm)	Radius (600mm)	Radius (900mm)
CXI-30°	6"	150	210818	210839	210860	214969	214972	214975	-	-	-
	9"	230	210819	210840	210861	210881	210899	210917	210935	210953	210971
	12"	300	210820	210841	210862	210882	210900	210918	210936	210954	210972
	18"	450	210821	210842	210863	210883	210901	210919	210937	210955	210973
	24"	600	210822	210843	210864	210884	210902	210920	210938	210956	210974
	30"	750	210823	210844	210865	210885	210903	210921	210939	210957	210975
	36"	900	210824	210845	210866	210886	210904	210922	210940	210958	210976
CXI-45°	6"	150	210825	210846	210867	214970	214973	214976	-	-	-
	9"	230	210826	210847	210868	210887	210905	210923	210941	210959	210977
	12"	300	210827	210848	210869	210888	210906	210924	210942	210960	210978
	18"	450	210828	210849	210870	210889	210907	210925	210943	210961	210979
	24"	600	210829	210850	210871	210890	210908	210926	210944	210962	210980
	30"	750	210830	210851	210872	210891	210909	210927	210945	210963	210981
	36"	900	210831	210852	210873	210892	210910	210928	210946	210964	210982
CXI-90°	6"	150	210832	210853	210874	214971	214974	214977	-	-	-
	9"	230	210833	210854	210875	210893	210911	210929	210947	210965	210983
	12"	300	210834	210855	210876	210894	210912	210930	210948	210966	210984
	18"	450	210835	210856	210877	210895	210913	210931	210949	210967	210985
	24"	600	210836	210857	210878	210896	210914	210932	210950	210968	210986
	30"	750	210837	210858	210879	210897	210915	210933	210951	210969	210987
	36"	900	210838	210859	210880	210898	210916	210934	210952	210970	210988

8x 212096 SS304 + 2X JUI

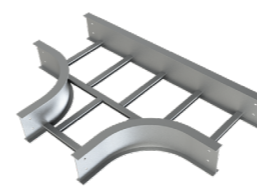
CCI INSIDE BEND



MODEL	WIDTH		HIGH (100mm)			HIGH (125mm)			HIGH (150mm)		
	inch	mm	Radius (300mm)	Radius (600mm)	Radius (900mm)	Radius (300mm)	Radius (600mm)	Radius (900mm)	Radius (300mm)	Radius (600mm)	Radius (900mm)
CCI-30°	6"	150	210647	210668	210689	214960	214963	214966	-	-	-
	9"	230	210648	210669	210690	210710	210728	210746	210764	210782	210800
	12"	300	210649	210670	210691	210711	210729	210747	210765	210783	210801
	18"	450	210650	210671	210692	210712	210730	210748	210766	210784	210802
	24"	600	210651	210672	210693	210713	210731	210749	210767	210785	210803
	30"	750	210652	210673	210694	210714	210732	210750	210768	210786	210804
	36"	900	210653	210674	210695	210715	210733	210751	210769	210787	210805
CCI-45°	6"	150	210654	210675	210696	214961	214964	214967	-	-	-
	9"	230	210655	210676	210697	210716	210734	210752	211070	210788	210806
	12"	300	210656	210677	210698	210717	210735	210753	211071	210789	210807
	18"	450	210657	210678	210699	210718	210736	210754	211072	210790	210808
	24"	600	210658	210679	210700	210719	210737	210755	211073	210791	210809
	30"	750	210659	210680	210701	210720	210738	210756	211074	210792	210810
	36"	900	210660	210681	210702	210721	210739	210757	211075	210793	210811
CCI-90°	6"	150	210661	210682	210703	214962	214965	214968	-	-	-
	9"	230	210662	210683	210704	210722	210740	210758	210776	210794	210812
	12"	300	210663	210684	210705	210723	210741	210759	210777	210795	210813
	18"	450	210664	210685	210706	210724	210742	210760	210778	210796	210814
	24"	600	210665	210686	210707	210725	210743	210761	210779	210797	210815
	30"	750	210666	210687	210708	210726	210744	210762	210780	210798	210816
	36"	900	210667	210688	210709	210727	210745	210763	210781	210799	210817

8x 212096 SS304 + 2X JUI

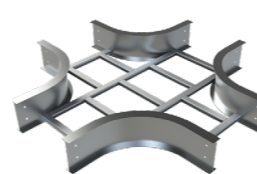
TEI TEE BEND



MODEL	WIDTH		HIGH (100mm)			HIGH (125mm)			HIGH (150mm)		
	inch	mm	Radius (300mm)	Radius (600mm)	Radius (900mm)	Radius (300mm)	Radius (600mm)	Radius (900mm)	Radius (300mm)	Radius (600mm)	Radius (900mm)
TEI-90°	6"	150	210989	210996	211003	214978	214979	214980	-	-	-
	9"	230	210990	210997	211004	211010	211016	211022	211028	211034	211040
	12"	300	210991	210998	211005	211011	211017	211023	211029	211035	211041
	18"	450	210992	210999	211006	211012	211018	211024	211030	211036	211042
	24"	600	210993	211000	211007	211013	211019	211025	211031	211037	211043
	30"	750	210994	211001	211008	211014	211020	211026	211032	211038	211044
	36"	900	210995	211002	211009	211015	211021	211027	211033	211039	211045

8x 212096 SS304 + 2X JUI

CRI CROSS BEND



MODEL	WIDTH		HIGH (100mm)			HIGH (125mm)			HIGH (150mm)		
	inch	mm	Radius (300mm)	Radius (600mm)	Radius (900mm)	Radius (300mm)	Radius (600mm)	Radius (900mm)	Radius (300mm)	Radius (600mm)	Radius (900mm)
CRI-90°	6"	150	211046	211053	211060	214981	214982	214983	-	-	-
	9"	230	211047	211054	211061	211067	211073	211079	211085	211091	211097
	12"	300	211048	211055	211062	211068	211074	211080	211086	211092	211098
	18"	450	211049	211056	211063	211069	211075	211081	211087	211093	211099
	24"	600	211050	211057	211064	211070	211076	211082	211088	211094	211100
	30"	750	211051	211058	211065	211071	211077	211083	211089	211095	211101
	36"	900	211052	211059	211066	211072	211078	211084	211090	211096	211102

8x 212096 SS304 + 2X JUI

RII LEFT REDUCTION BEND



MODEL	WIDTH (B1XB2)				HIGH (100mm)	HIGH (125mm)	HIGH (150mm)
	inch	mm	inch	mm	-	-	-
RII	9"	230	6"	150	211103	214984	-
	12"	300	9"	230	211104	214985	211130
	12"	300	6"	150	211105	211118	-
	18"	450	12"	300	211106	214986	211131
	18"	450	9"	230	211107	211119	211132
	18"	450	6"	150	211108	211120	-
	24"	600	18"	450	211109	211121	211133
	24"	600	12"	300	211110	211122	211134
	24"	600	9"	230	211111	211123	211135
	30"	600	24"	600	211112	211124	211136
	30"	600	18"	450	211113	211125	211137
	30"	600	12"	300	211114	211126	211138
	36"	900	30"	750	211115	211127	211139
	36"	900	24"	600	211116	211128	211140
	36"	900	18"	450	211117	211129	211141

8x 212096 SS304 + 2X JUI

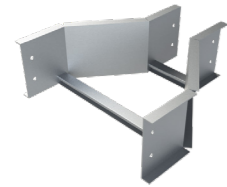
RDI RIGHT REDUCTION BEND



MODEL	WIDTH (B1XB2)				HIGH (100mm)	HIGH (125mm)	HIGH (150mm)
	inch	mm	inch	mm	-	-	-
RDI	9"	230	6"	150	211181	214990	-
	12"	300	9"	230	211182	211196	211208
	12"	300	6"	150	211183	214991	-
	18"	450	12"	300	211184	211197	211209
	18"	450	9"	230	211185	211198	211210
	18"	450	6"	150	211186	214992	-
	24"	600	18"	450	211187	211199	211211
	24"	600	12"	300	211188	211200	211212
	24"	600	9"	230	211189	211201	211213
	30"	600	24"	600	211190	211202	211214
	30"	600	18"	450	211191	211203	211215
	30"	600	12"	300	211192	211204	211216
	36"	900	30"	750	211193	211205	211217
	36"	900	24"	600	211194	211206	211218
	36"	900	18"	450	211195	211207	211219

8x 212096 SS304 + 2X JUI

RCI CENTRAL REDUCTION BEND



MODEL	WIDTH (B1XB2)				HIGH (100mm)	HIGH (125mm)	HIGH (150mm)
	inch	mm	inch	mm	-	-	-
RCI	9"	230	6"	150	211142	214987	-
	12"	300	9"	230	211143	211157	211169
	12"	300	6"	150	211144	214988	-
	18"	450	12"	300	211145	211158	211170
	18"	450	9"	230	211146	211159	211171
	18"	450	6"	150	211147	214989	-
	24"	600	18"	450	211148	211160	211172
	24"	600	12"	300	211149	211161	211173
	24"	600	9"	230	211150	211162	211174
	30"	600	24"	600	211151	211163	211175
	30"	600	18"	450	211152	211164	211176
	30"	600	12"	300	211153	211165	211177
	36"	900	30"	750	211154	211166	211178
	36"	900	24"	600	211155	211167	211179
	36"	900	18"	450	211156	211168	211180

8x 212096 SS304 + 2X JUI

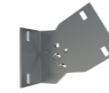
UNION JOINT JUI



UNION JOINT JUI-A



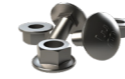
UNION JOINT JUI-A



UNION JOINT JUI-B



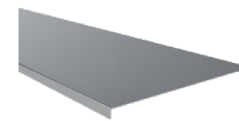
SCREWS B3



BEV



COVER TI



COVER CLAMP PTI



	LENGTH		ALUMINUM
	inch	mm	REF.
JUI 4	4"	100	211220
JUI 5	5"	125	211221
JUI 5	6"	150	211222

	LENGTH		ALUMINUM
	inch	mm	REF.
JUI-A 4	4"	100	211223
JUI-A 5	5"	125	211224
JUI-A 5	6"	150	211225

	LENGTH		ALUMINUM
	inch	mm	REF.
JUI 4	4"	100	215062
JUI 5	5"	125	215063
JUI 5	6"	150	215064

	LENGTH		ALUMINUM
	inch	mm	REF.
JUI-B 4	4"	100	211236
JUI-B 5	5"	125	211237
JUI-B 5	6"	150	211238

	SS304	SS3016
	REF.	REF.
B3-50	212096	215575

	HDG	SS304
	REF.	REF.
BEV	211805	214473

	LENGTH		ALUMINUM
	inch	mm	REF.
TI 6"	6"	150	212080
TI 9"	9"	230	212081
TI 12"	12"	300	212082
TI 18"	18"	450	212083
TI 24"	24"	600	212084
TI 30"	30"	750	212085
TI 36"	36"	900	212086

	ALUMINUM
	REF.
PTI	212095

Special solutions/ Soluciones especiales

Basor provide a safe, easy-to-use and cost-effective management system for fragile optical cables. This system allows you to route fiber-optic cables between equipment, providing both the physical protection and bend radius management crucial to optical cable performance.

The product made in Halogen-free PC-ABS material, compliant with UL 94 V-0 is designed to make optical cable management systems safe and easy-to-use.

Posibility to create fully modular and scalable system with bend radius protection and is designed for three installation variables: hung from ceiling, top of rack support or a combination of these (multilevel installation).

Soluciones especiales

Basor proporciona un sistema de canalización seguro, fácil de usar y eficiente en coste para cables ópticos. Este sistema permite enrutar cables de fibra óptica entre equipos, proporcionando tanto la protección física como la gestión del radio de curvatura cruciales para el rendimiento del cable óptico.

El producto está fabricado en material PC-ABS sin halógenos, que cumple con UL 94 V-0, está diseñado para hacer que los sistemas de administración de cables ópticos sean seguros y fáciles de usar.

Existe la posibilidad de crear un sistema totalmente modular y escalable con protección de radio de curvatura y está diseñado para tres variables de instalación: colgado del techo, soporte superior del rack o una combinación de estos (instalación multinivel).

Fiber Management/ Canalización de fibra

Sizes / Tamaños:

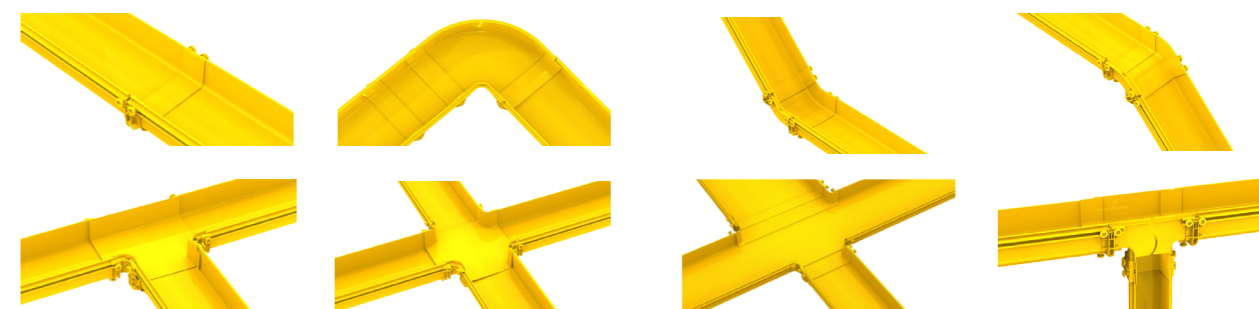
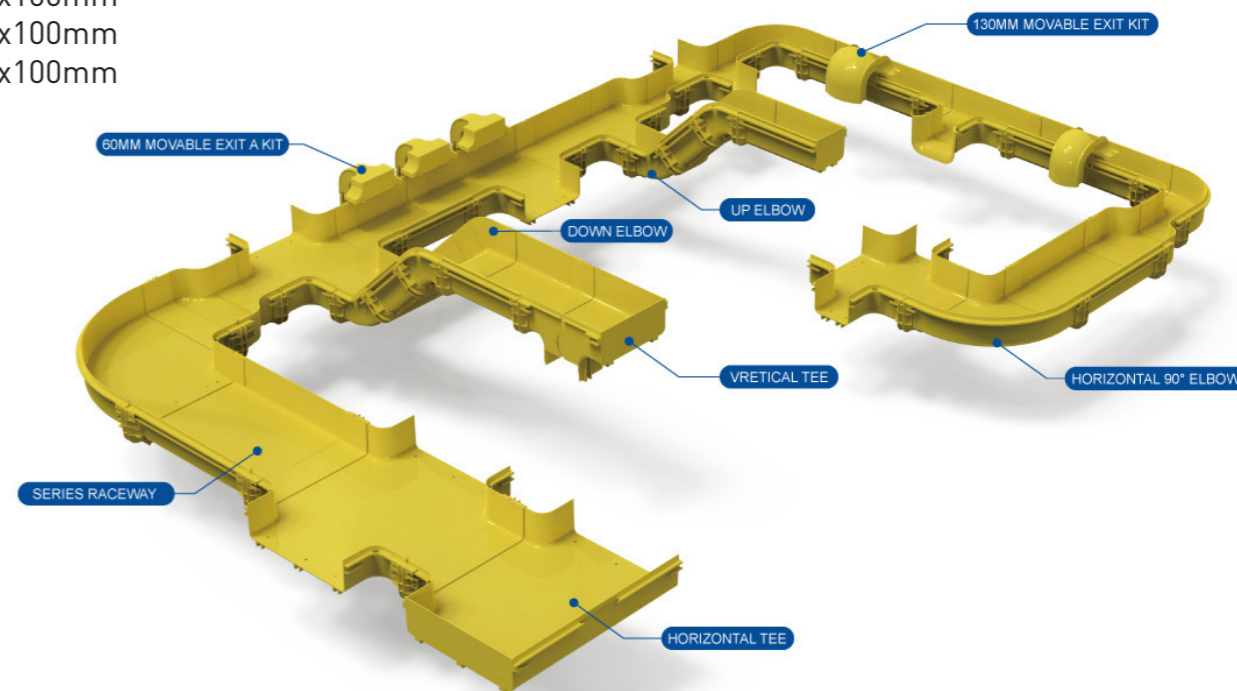
60x60mm

120x100mm

240x100mm

360x100mm

600x100mm



CHARACTERISTICS

Designed to make optical cable management systems safe and easy-to-use

Fully modular, scalable system

Bend radius protection

Halogen-free PC-ABS material, compliant with UL 94 V-0

Designed for three installation variables: hung from ceiling, top of rack support or a combination of these

Multilevel installation

CARACTERÍSTICAS

Diseñado para hacer que los sistemas de gestión de cables ópticos sean seguros y fáciles de usar

Sistema completamente modular y escalable

Protección de radio de curvatura

Material PC-ABS sin halógenos, compatible con UL 94 V-0

Product available
only on request
Producto disponible
solo bajo pedido

Our experience/ Nuestra experiencia

For the last 20 years Basor's International Projects team has been working in more than 40 countries and growing economies to deliver the best solutions and technical products for its situations. These projects improve the quality of infrastructures systems and help us to offer the best of us. We work with engineering, EPCs and installers to help them do this.

Durante los últimos 20 años, el equipo de Basor especializado en proyectos internacionales, ha estado trabajando en más de 40 países y economías emergentes para entregar las mejores soluciones y los productos más técnicos para todo tipo de situaciones. Estos proyectos mejoran la calidad de los sistemas e infraestructuras y nos ayudan a seguir ofreciendo lo mejor de nosotros. Trabajamos con las ingenierías, los EPCs y los instaladores para ayudarles en todo lo posible.



+70 Data center projects **worldwide**

Notes/Notas

BE GREEN
CableManagementSystems

BE Basor
CABLE TRAY SPECIALIST

BASOR ELECTRIC S.A Headquarters

Avenida Alcodar 45-47
46701 Gandia SPAIN

+34 962876695
basor@basor.com
www.basor.com


@basorelectric


[www.linkedin.com/
company/basor-electric-sa](https://www.linkedin.com/company/basor-electric-sa)


[www.youtube.com/user/
basorelectric](https://www.youtube.com/user/basorelectric)